

**[KO Validated] TRIM25 Rabbit Polyclonal
Antibody
CAB19887**



Product Information

Size:

20uL, 50uL, 100uL, 200uL

Observed MW:

71kDa

Calculated MW:

70kDa

Applications:

WB IHC IP

Reactivity:

Human, Mouse

Protein Background

The protein encoded by this gene is a member of the tripartite motif (TRIM) family. The TRIM motif includes three zinc-binding domains, a RING, a B-box type 1 and a B-box type 2, and a coiled-coil region. The protein localizes to the cytoplasm. The presence of potential DNA-binding and dimerization-transactivation domains suggests that this protein may act as a transcription factor, similar to several other members of the TRIM family. Expression of the gene is upregulated in response to estrogen, and it is thought to mediate estrogen actions in breast cancer as a primary response gene.

Immunogen information

Gene ID:

7706

Uniprot

Q14258

Synonyms:

TRIM25; EFP; RNF147; Z147; ZNF147

Antibody Information

Recommended dilutions:

WB 1:500 - 1:2000 IHC 1:50
- 1:100 IP 1:50 - 1:100

Source:

Rabbit

Isotype:

IgG

Immunogen:

Recombinant protein of human TRIM25.

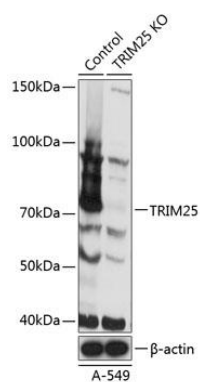
Storage:

Store at -20°C. Avoid freeze / thaw cycles. Buffer: PBS with 0.02% sodium azide, 50% glycerol, pH7.3.

Purification:

Affinity purification

Product Images



Western blot analysis of extracts from normal (control) and TRIM25 knockout (KO) A-549 cells, using TRIM25 antibody (CAB19887) at 1:3000 dilution. Secondary antibody: HRP Goat Anti-Rabbit IgG (H+L) (CABS014) at 1:10000 dilution. Lysates/proteins: 25ug per lane. Blocking buffer: 3% nonfat dry milk in TBST. Detection: ECL Basic Kit (CABM00020). Exposure time: 10S.