

**[KO Validated] NUP210 Rabbit Polyclonal  
Antibody  
CAB19895**



---

**Product Information**

**Size:**

20uL, 50uL, 100uL, 200uL

**Observed MW:**

290KDa

**Calculated MW:**

205kDa

**Applications:**

WB IF

**Reactivity:**

Human, Mouse, Rat

**Protein Background**

The nuclear pore complex is a massive structure that extends across the nuclear envelope, forming a gateway that regulates the flow of macromolecules between the nucleus and the cytoplasm. Nucleoporins are the main components of the nuclear pore complex in eukaryotic cells. The protein encoded by this gene is a membrane-spanning glycoprotein that is a major component of the nuclear pore complex. Multiple pseudogenes related to this gene are located on chromosome 3.

**Immunogen information**

**Gene ID:**

23225

**Uniprot**

Q8TEM1

**Synonyms:**

NUP210; GP210; POM210

**Antibody Information**

**Recommended dilutions:**

WB 1:1000 - 1:2000 IF 1:50  
- 1:200

**Source:**

Rabbit

**Isotype:**

IgG

**Purification:**

Affinity purification

**Immunogen:**

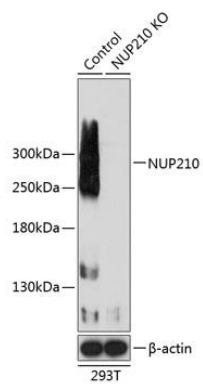
Recombinant protein of human NUP210.

**Storage:**

Store at -20°C. Avoid freeze / thaw cycles. Buffer: PBS with 0.02% sodium azide, 50% glycerol, pH7.3.

## Product Images

---



Western blot analysis of extracts from normal (control) and NUP210 knockout (KO) 293T cells, using NUP210 antibody (CAB19895) at 1:1000 dilution. Secondary antibody: HRP Goat Anti-Rabbit IgG (H+L) (CABS014) at 1:10000 dilution. Lysates/proteins: 25ug per lane. Blocking buffer: 3% nonfat dry milk in TBST. Detection: ECL Basic Kit (CABM00020). Exposure time: 90s.