

[KO Validated] MDH2 Rabbit Polyclonal Antibody



CAB19906

Product Information

Size:

20uL, 50uL, 100uL, 200uL

Observed MW:

37KDa

Calculated MW:

30kDa/35kDa

Applications:

WB IF

Reactivity:

Human, Mouse

Protein Background

Malate dehydrogenase catalyzes the reversible oxidation of malate to oxaloacetate, utilizing the NAD/NADH cofactor system in the citric acid cycle. The protein encoded by this gene is localized to the mitochondria and may play pivotal roles in the malate-aspartate shuttle that operates in the metabolic coordination between cytosol and mitochondria. Several transcript variants encoding different isoforms have been found for this gene.

Immunogen information

Gene ID:

4191

Uniprot

P40926

Synonyms:

MDH2; EIEE51; M-MDH; MDH; MGC:3559; MOR1

Antibody Information

Recommended dilutions:

WB 1:500 - 1:2000 IF 1:50 - 1:200

Source:

Rabbit

Isotype:

IgG

Purification:

Affinity purification

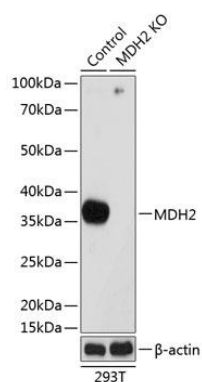
Immunogen:

Recombinant protein of human MDH2.

Storage:

Store at -20°C. Avoid freeze / thaw cycles. Buffer: PBS with 0.02% sodium azide, 50% glycerol, pH7.3.

Product Images



Western blot analysis of extracts from normal (control) and MDH2 knockout (KO) 293T cells, using MDH2 antibody (CAB19906) at 1:3000 dilution. Secondary antibody: HRP Goat Anti-Rabbit IgG (H+L) (CABS014) at 1:10000 dilution. Lysates/proteins: 25ug per lane. Blocking buffer: 3% nonfat dry milk in TBST. Detection: ECL Basic Kit (CABM00020). Exposure time: 60s.