

**[KO Validated] TIMM17A Rabbit Polyclonal
Antibody
CAB19917**



Product Information

Size:

20uL, 50uL, 100uL, 200uL

Observed MW:

16KDa

Calculated MW:

18kDa

Applications:

WB IHC IF

Reactivity:

Human, Mouse

Antibody Information

Recommended dilutions:

WB 1:500 - 1:2000 IHC 1:50
- 1:200 IF 1:50 - 1:200

Source:

Rabbit

Isotype:

IgG

Purification:

Affinity purification

Protein Background

Immunogen information

Gene ID:

10440

Uniprot

Q99595

Synonyms:

TIMM17A; TIM17; TIM17A

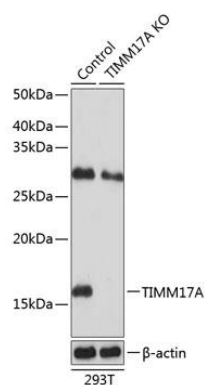
Immunogen:

Recombinant protein of human TIMM17A.

Storage:

Store at -20°C. Avoid freeze / thaw cycles. Buffer: PBS with 0.02% sodium azide, 50% glycerol, pH7.3.

Product Images



Western blot analysis of extracts from normal (control) and TIMM17A knockout (KO) 293T cells, using TIMM17A antibody (CAB19917) at 1:1000 dilution. Secondary antibody: HRP Goat Anti-Rabbit IgG (H+L) (CABS014) at 1:10000 dilution. Lysates/proteins: 25ug per lane. Blocking buffer: 3% nonfat dry milk in TBST. Detection: ECL Basic Kit (CABM00020). Exposure time: 1s.