

# [KO Validated] TIMM17A Rabbit Polyclonal Antibody

## CAB19918



### Product Information

#### Size:

20uL, 50uL, 100uL, 200uL

#### Observed MW:

16KDa

#### Calculated MW:

18kDa

#### Applications:

WB IF

#### Reactivity:

Human, Mouse

### Antibody Information

#### Recommended dilutions:

WB 1:500 - 1:2000 IF 1:10 - 1:100

#### Source:

Rabbit

#### Isotype:

IgG

#### Purification:

Affinity purification

### Protein Background

#### Immunogen information

##### Gene ID:

10440

##### Uniprot

Q99595

##### Synonyms:

TIMM17A; TIM17; TIM17A

##### Immunogen:

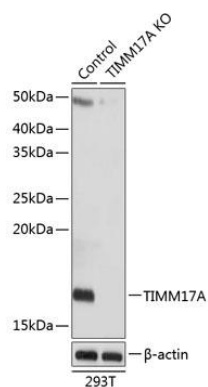
Recombinant protein of human TIMM17A.

##### Storage:

Store at -20°C. Avoid freeze / thaw cycles. Buffer: PBS with 0.02% sodium azide, 50% glycerol, pH7.3.

## Product Images

---



Western blot analysis of extracts from normal (control) and TIMM17A knockout (KO) 293T cells, using TIMM17A antibody (CAB19918) at 1:1000 dilution. Secondary antibody: HRP Goat Anti-Rabbit IgG (H+L) (CABS014) at 1:10000 dilution. Lysates/proteins: 25ug per lane. Blocking buffer: 3% nonfat dry milk in TBST. Detection: ECL Basic Kit (CABM00020). Exposure time: 1s.