

INSIG2 Rabbit Polyclonal Antibody



CAB1992

Product Information

Size:

20uL, 50uL, 100uL, 200uL

Observed MW:

27kDa

Calculated MW:

24kDa

Applications:

WB

Reactivity:

Human, Mouse

Protein Background

The protein encoded by this gene is highly similar to the protein product encoded by gene INSIG1. Both INSIG1 protein and this protein are endoplasmic reticulum proteins that block the processing of sterol regulatory element binding proteins (SREBPs) by binding to SREBP cleavage-activating protein (SCAP), and thus prevent SCAP from escorting SREBPs to the Golgi.

Immunogen information

Gene ID:

51141

Uniprot

Q9Y5U4

Synonyms:

INSIG2; INSIG-2

Antibody Information

Recommended dilutions:

WB 1:500 - 1:2000

Source:

Rabbit

Isotype:

IgG

Purification:

Affinity purification

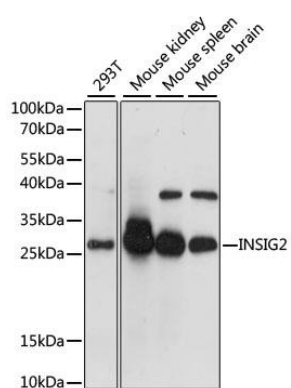
Immunogen:

A synthetic peptide corresponding to a sequence within amino acids 50-150 of human INSIG2 (NP_057217.2).

Storage:

Store at -20°C. Avoid freeze / thaw cycles. Buffer: PBS with 0.02% sodium azide, 50% glycerol, pH7.3.

Product Images



Western blot analysis of extracts of various cell lines, using INSIG2 antibody (CAB1992) at 1:1000 dilution. Secondary antibody: HRP Goat Anti-Rabbit IgG (H+L) (CABS014) at 1:10000 dilution. Lysates/proteins: 25ug per lane. Blocking buffer: 3% nonfat dry milk in TBST. Detection: ECL Enhanced Kit (CABM00021). Exposure time: 1.