

# [KO Validated] PACSIN2 Rabbit Polyclonal Antibody

CAB19941



## Product Information

### Size:

20uL, 50uL, 100uL, 200uL

### Observed MW:

62KDa

### Calculated MW:

51kDa/55kDa

### Applications:

WB

### Reactivity:

Human, Mouse

## Protein Background

This gene is a member of the protein kinase C and casein kinase substrate in neurons family. The encoded protein is involved in linking the actin cytoskeleton with vesicle formation by regulating tubulin polymerization. Alternative splicing results in multiple transcript variants.

## Immunogen information

### Gene ID:

11252

### Uniprot

Q9UNF0

### Synonyms:

PACSIN2; SDPII

## Antibody Information

### Recommended dilutions:

WB 1:500 - 1:2000

### Source:

Rabbit

### Isotype:

IgG

### Purification:

Affinity purification

### Immunogen:

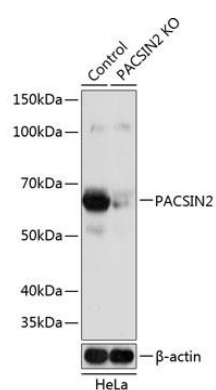
Recombinant protein of human PACSIN2.

### Storage:

Store at -20°C. Avoid freeze / thaw cycles. Buffer: PBS with 0.02% sodium azide, 50% glycerol, pH7.3.

## Product Images

---



Western blot analysis of extracts from normal (control) and PACSIN2 knockout (KO) HeLa cells, using PACSIN2 antibody (CAB19941) at 1:1000 dilution. Secondary antibody: HRP Goat Anti-Rabbit IgG (H+L) (CABS014) at 1:10000 dilution. Lysates/proteins: 25ug per lane. Blocking buffer: 3% nonfat dry milk in TBST. Detection: ECL Basic Kit (CABM00020). Exposure time: 1s.