

# [KO Validated] ATPIF1 Rabbit Polyclonal Antibody

## CAB19946



### Product Information

**Size:**

20uL, 50uL, 100uL, 200uL

**Observed MW:**

12KDa

**Calculated MW:**

6kDa/7kDa/12kDa

**Applications:**

WB IHC IF

**Reactivity:**

Human, Mouse

### Antibody Information

**Recommended dilutions:**

WB 1:500 - 1:2000 IHC 1:50  
- 1:100 IF 1:50 - 1:100

**Source:**

Rabbit

**Isotype:**

IgG

**Purification:**

Affinity purification

### Protein Background

This gene encodes a mitochondrial ATPase inhibitor. Alternative splicing occurs at this locus and three transcript variants encoding distinct isoforms have been identified.

### Immunogen information

**Gene ID:**

93974

**Uniprot**

Q9UII2

**Synonyms:**

ATPIF1; ATP1; ATP1P; IP

**Immunogen:**

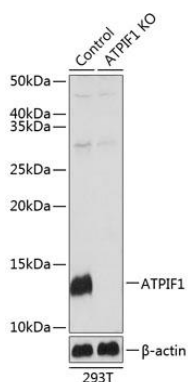
Recombinant protein of human ATPIF1.

**Storage:**

Store at -20°C. Avoid freeze / thaw cycles. Buffer: PBS with 0.02% sodium azide, 50% glycerol, pH7.3.

## Product Images

---



Western blot analysis of extracts from normal (control) and ATPIF1 knockout (KO) 293T cells, using ATPIF1 antibody (CAB19946) at 1:1000 dilution. Secondary antibody: HRP Goat Anti-Rabbit IgG (H+L) (CABS014) at 1:10000 dilution. Lysates/proteins: 25ug per lane. Blocking buffer: 3% nonfat dry milk in TBST. Detection: ECL Basic Kit (CABM00020). Exposure time: 1s.