

# AP2B1 Rabbit Polyclonal Antibody



**CAB1995**

---

## Product Information

### Size:

20uL, 50uL, 100uL, 200uL

### Observed MW:

105kDa

### Calculated MW:

98kDa/104kDa/105kDa

### Applications:

WB IHC

### Reactivity:

Human, Mouse

## Protein Background

The protein encoded by this gene is one of two large chain components of the assembly protein complex 2, which serves to link clathrin to receptors in coated vesicles. The encoded protein is found on the cytoplasmic face of coated vesicles in the plasma membrane. Two transcript variants encoding different isoforms have been found for this gene.

## Immunogen information

### Gene ID:

163

### Uniprot

P63010

### Synonyms:

AP2B1; ADTB2; AP105B; AP2-BETA; CLAPB1

## Antibody Information

### Recommended dilutions:

WB 1:500 - 1:2000 IHC 1:50  
- 1:200

### Source:

Rabbit

### Isotype:

IgG

### Purification:

Affinity purification

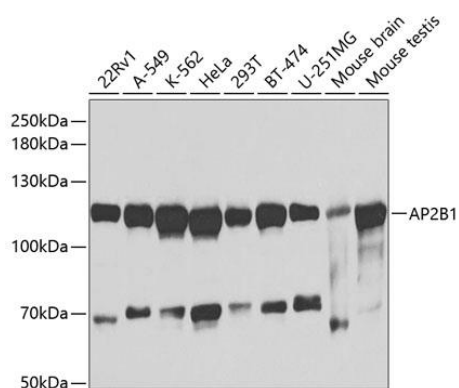
### Immunogen:

Recombinant fusion protein containing a sequence corresponding to amino acids 752-951 of human AP2B1 (NP\_001025177.1).

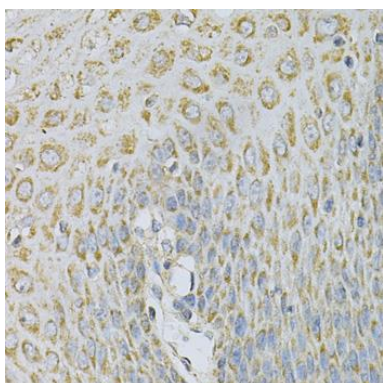
### Storage:

Store at -20°C. Avoid freeze / thaw cycles. Buffer: PBS with 0.02% sodium azide, 50% glycerol, pH7.3.

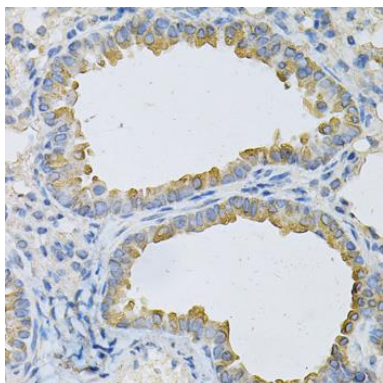
## Product Images



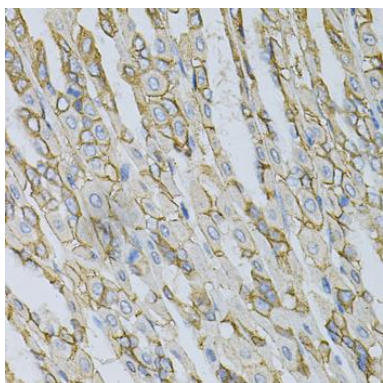
Western blot analysis of extracts of various cell lines, using AP2B1 antibody (CAB1995) at 1:1000 dilution. Secondary antibody: HRP Goat Anti-Rabbit IgG (H+L) (CABS014) at 1:10000 dilution. Lysates/proteins: 25ug per lane. Blocking buffer: 3% nonfat dry milk in TBST. Detection: ECL Basic Kit (CABM00020). Exposure time: 30s.



Immunohistochemistry of paraffin-embedded human esophagus using AP2B1 Antibody (CAB1995) at dilution of 1:100 (40x lens).



Immunohistochemistry of paraffin-embedded mouse lung using AP2B1 Antibody (CAB1995) at dilution of 1:100 (40x lens).



Immunohistochemistry of paraffin-embedded mouse stomach using AP2B1 Antibody (CAB1995) at dilution of 1:100 (40x lens).