

**[KO Validated] SNAP29 Rabbit Polyclonal  
Antibody**  
**CAB19952**



---

**Product Information**

**Size:**

20uL, 50uL, 100uL, 200uL

**Observed MW:**

29kDa

**Calculated MW:**

28kDa

**Applications:**

WB IHC

**Reactivity:**

Human, Mouse, Rat

**Protein Background**

This gene, a member of the SNAP25 gene family, encodes a protein involved in multiple membrane trafficking steps. Two other members of this gene family, SNAP23 and SNAP25, encode proteins that bind a syntaxin protein and mediate synaptic vesicle membrane docking and fusion to the plasma membrane. The protein encoded by this gene binds tightly to multiple syntaxins and is localized to intracellular membrane structures rather than to the plasma membrane. While the protein is mostly membrane-bound, a significant fraction of it is found free in the cytoplasm. Use of multiple polyadenylation sites has been noted for this gene.

**Immunogen information**

**Gene ID:**

9342

**Uniprot**

O95721

**Synonyms:**

SNAP29; CEDNIK; SNAP-29

**Antibody Information**

**Recommended dilutions:**

WB 1:1000 - 1:4000 IHC

1:50 - 1:200

**Source:**

Rabbit

**Isotype:**

IgG

**Immunogen:**

Recombinant protein of human SNAP29.

**Storage:**

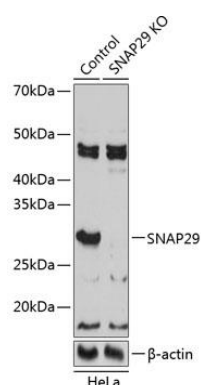
Store at -20°C. Avoid freeze / thaw cycles. Buffer: PBS with 0.02% sodium azide, 50% glycerol, pH7.3.

**Purification:**

Affinity purification

## Product Images

---



Western blot analysis of extracts from normal (control) and SNAP29 knockout (KO) HeLa cells, using SNAP29 antibody (CAB19952) at 1:1000 dilution. Secondary antibody: HRP Goat Anti-Rabbit IgG (H+L) (CABS014) at 1:10000 dilution. Lysates/proteins: 25ug per lane. Blocking buffer: 3% nonfat dry milk in TBST. Detection: ECL Basic Kit (CABM00020). Exposure time: 90s.