

[KO Validated] NHEJ1 Rabbit Polyclonal Antibody



CAB19957

Product Information

Size:

20uL, 50uL, 100uL, 200uL

Observed MW:

39KDa

Calculated MW:

33kDa/35kDa

Applications:

WB IHC IF

Reactivity:

Human, Mouse, Rat

Protein Background

Double-strand breaks in DNA result from genotoxic stresses and are among the most damaging of DNA lesions. This gene encodes a DNA repair factor essential for the nonhomologous end-joining pathway, which preferentially mediates repair of double-stranded breaks. Mutations in this gene cause different kinds of severe combined immunodeficiency disorders.

Immunogen information

Gene ID:

79840

Uniprot

Q9H9Q4

Synonyms:

NHEJ1; XLF

Antibody Information

Recommended dilutions:

WB 1:200 - 1:2000 IHC 1:50
- 1:200 IF 1:50 - 1:200

Source:

Rabbit

Isotype:

IgG

Purification:

Affinity purification

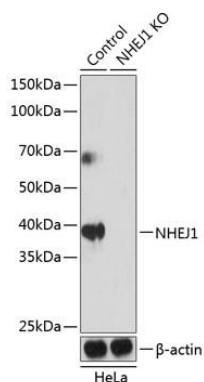
Immunogen:

Recombinant protein of human NHEJ1.

Storage:

Store at -20°C. Avoid freeze / thaw cycles. Buffer: PBS with 0.02% sodium azide, 50% glycerol, pH7.3.

Product Images



Western blot analysis of extracts from normal (control) and NHEJ1 knockout (KO) HeLa cells, using NHEJ1 antibody (CAB19957) at 1:1000 dilution. Secondary antibody: HRP Goat Anti-Rabbit IgG (H+L) (CABS014) at 1:10000 dilution. Lysates/proteins: 25ug per lane. Blocking buffer: 3% nonfat dry milk in TBST. Detection: ECL Enhanced Kit (CABM00021). Exposure time: 60s.