

# [KO Validated] HPCAL1 Rabbit Polyclonal Antibody

## CAB19964



### Product Information

**Size:**

20uL, 50uL, 100uL, 200uL

**Observed MW:**

18KDa

**Calculated MW:**

22kDa

**Applications:**

WB IP

**Reactivity:**

Human, Mouse, Rat

### Protein Background

The protein encoded by this gene is a member of neuron-specific calcium-binding proteins family found in the retina and brain. It is highly similar to human hippocalcin protein and nearly identical to the rat and mouse hippocalcin like-1 proteins. It may be involved in the calcium-dependent regulation of rhodopsin phosphorylation and may be of relevance for neuronal signalling in the central nervous system. Several alternatively spliced transcript variants encoding the same protein have been found for this gene.

### Immunogen information

**Gene ID:**

3241

**Uniprot**

P37235

**Synonyms:**

HPCAL1; BDR1; HLP2; VILIP-3

### Antibody Information

**Recommended dilutions:**

WB 1:500 - 1:2000 IP 1:20 - 1:100

**Source:**

Rabbit

**Isotype:**

IgG

**Purification:**

Affinity purification

**Immunogen:**

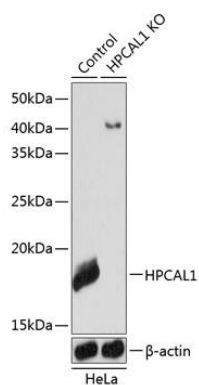
Recombinant protein of human HPCAL1.

**Storage:**

Store at -20°C. Avoid freeze / thaw cycles. Buffer: PBS with 0.02% sodium azide, 50% glycerol, pH7.3.

## Product Images

---



Western blot analysis of extracts from normal (control) and HPCAL1 knockout (KO) HeLa cells, using HPCAL1 antibody (CAB19964) at 1:1000 dilution. Secondary antibody: HRP Goat Anti-Rabbit IgG (H+L) (CABS014) at 1:10000 dilution. Lysates/proteins: 25ug per lane. Blocking buffer: 3% nonfat dry milk in TBST. Detection: ECL Basic Kit (CABM00020). Exposure time: 1s.