

**[KO Validated] LRRC59 Rabbit Polyclonal
Antibody
CAB19966**



Product Information

Size:

20uL, 50uL, 100uL, 200uL

Observed MW:

35KDa

Calculated MW:

34kDa

Applications:

WB IP

Reactivity:

Human, Mouse, Rat

Antibody Information

Recommended dilutions:

WB 1:500 - 1:2000 IP 1:50 -
1:100

Source:

Rabbit

Isotype:

IgG

Purification:

Affinity purification

Protein Background

Immunogen information

Gene ID:

55379

Uniprot

Q96AG4

Synonyms:

LRRC59; PRO1855; p34

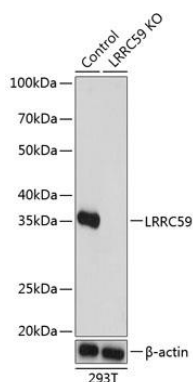
Immunogen:

Recombinant protein of human LRRC59.

Storage:

Store at -20°C. Avoid freeze / thaw cycles. Buffer: PBS with 0.02%
sodium azide, 50% glycerol, pH7.3.

Product Images



Western blot analysis of extracts from normal (control) and LRRC59 knockout (KO) 293T cells, using LRRC59 antibody (CAB19966) at 1:1000 dilution. Secondary antibody: HRP Goat Anti-Rabbit IgG (H+L) (CABS014) at 1:10000 dilution. Lysates/proteins: 25ug per lane. Blocking buffer: 3% nonfat dry milk in TBST. Detection: ECL Basic Kit (CABM00020). Exposure time: 1s.