

# [KO Validated] PHGDH Rabbit Polyclonal Antibody

## CAB19974



### Product Information

**Size:**

20uL, 50uL, 100uL, 200uL

**Observed MW:**

57KDa

**Calculated MW:**

56kDa

**Applications:**

WB IF

**Reactivity:**

Human, Mouse, Rat

### Antibody Information

**Recommended dilutions:**

WB 1:500 - 1:2000 IF 1:50 - 1:200

**Source:**

Rabbit

**Isotype:**

IgG

**Purification:**

Affinity purification

### Protein Background

This gene encodes the enzyme which is involved in the early steps of L-serine synthesis in animal cells. L-serine is required for D-serine and other amino acid synthesis. The enzyme requires NAD/NADH as a cofactor and forms homotetramers for activity. Mutations in this gene have been found in a family with congenital microcephaly, psychomotor retardation and other symptoms. Multiple alternatively spliced transcript variants have been found, however the full-length nature of most are not known.

### Immunogen information

**Gene ID:**

26227

**Uniprot**

O43175

**Synonyms:**

PHGDH; 3-PGDH; 3PGDH; HEL-S-113; NLS; NLS1; PDG; PGAD; PGD; PGDH; PHGDHD; SERA

**Immunogen:**

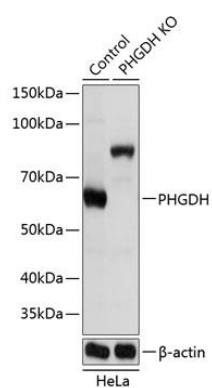
Recombinant protein of human PHGDH.

**Storage:**

Store at -20°C. Avoid freeze / thaw cycles. Buffer: PBS with 0.02% sodium azide, 50% glycerol, pH7.3.

## Product Images

---



Western blot analysis of extracts from normal (control) and PHGDH knockout (KO) HeLa cells, using PHGDH antibody (CAB19974) at 1:1000 dilution. Secondary antibody: HRP Goat Anti-Rabbit IgG (H+L) (CABS014) at 1:10000 dilution. Lysates/proteins: 25ug per lane. Blocking buffer: 3% nonfat dry milk in TBST. Detection: ECL Basic Kit (CABM00020). Exposure time: 1s.