

[KO Validated] OCRL Rabbit Polyclonal Antibody



CAB19976

Product Information

Size:

20uL, 50uL, 100uL, 200uL

Observed MW:

104kDa

Calculated MW:

103kDa/104kDa

Applications:

WB

Reactivity:

Human, Mouse, Rat

Protein Background

This gene encodes an inositol polyphosphate 5-phosphatase. This protein is involved in regulating membrane trafficking and is located in numerous subcellular locations including the trans-Golgi network, clathrin-coated vesicles and endosomes and the plasma membrane. This protein may also play a role in primary cilium formation. Mutations in this gene cause oculocerebrorenal syndrome of Lowe and also Dent disease. Alternate splicing results in multiple transcript variants.

Immunogen information

Gene ID:

4952

Uniprot

Q01968

Synonyms:

OCRL; INPP5F; LOCR; NPHL2; OCRL-1; OCRL1

Antibody Information

Recommended dilutions:

WB 1:500 - 1:2000

Source:

Rabbit

Isotype:

IgG

Purification:

Affinity purification

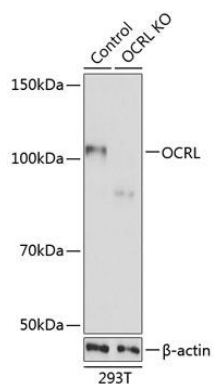
Immunogen:

Recombinant protein of human OCRL.

Storage:

Store at -20°C. Avoid freeze / thaw cycles. Buffer: PBS with 0.02% sodium azide, 50% glycerol, pH7.3.

Product Images



Western blot analysis of extracts from normal (control) and OCRL knockout (KO) 293T cells, using OCRL antibody (CAB19976) at 1:1000 dilution. Secondary antibody: HRP Goat Anti-Rabbit IgG (H+L) (CABS014) at 1:10000 dilution. Lysates/proteins: 25ug per lane. Blocking buffer: 3% nonfat dry milk in TBST. Detection: ECL Basic Kit (CABM00020). Exposure time: 90s.