

[KO Validated] CLUH Rabbit Polyclonal Antibody



CAB19979

Product Information

Size:

20uL, 50uL, 100uL, 200uL

Observed MW:

160KDa

Calculated MW:

146kDa

Applications:

WB IHC IF

Reactivity:

Human, Mouse

Antibody Information

Recommended dilutions:

WB 1:1000 - 1:4000 IHC
1:50 - 1:200 IF 1:50 - 1:200

Source:

Rabbit

Isotype:

IgG

Purification:

Affinity purification

Protein Background

Immunogen information

Gene ID:

23277

Uniprot

O75153

Synonyms:

CLUH; CLU1; KIAA0664

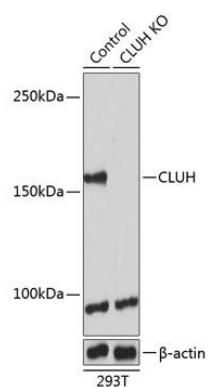
Immunogen:

Recombinant protein of human CLUH.

Storage:

Store at -20°C. Avoid freeze / thaw cycles. Buffer: PBS with 0.02% sodium azide, 50% glycerol, pH7.3.

Product Images



Western blot analysis of extracts from normal (control) and CLUH knockout (KO) 293T cells, using CLUH antibody (CAB19979) at 1:1000 dilution. Secondary antibody: HRP Goat Anti-Rabbit IgG (H+L) (CABS014) at 1:10000 dilution. Lysates/proteins: 25ug per lane. Blocking buffer: 3% nonfat dry milk in TBST. Detection: ECL Basic Kit (CABM00020). Exposure time: 1s.