

[KO Validated] MTAP Rabbit Polyclonal Antibody



CAB19981

Product Information

Size:

20uL, 50uL, 100uL, 200uL

Observed MW:

31kDa

Calculated MW:

26kDa/30kDa/31kDa/32kDa/
33kDa/36kDa/38kDa

Applications:

WB IHC IF

Reactivity:

Human, Mouse, Rat

Antibody Information

Recommended dilutions:

WB 1:500 - 1:2000 IHC 1:50
- 1:200 IF 1:50 - 1:200

Source:

Rabbit

Isotype:

IgG

Purification:

Affinity purification

Protein Background

This gene encodes an enzyme that plays a major role in polyamine metabolism and is important for the salvage of both adenine and methionine. The encoded enzyme is deficient in many cancers because this gene and the tumor suppressor p16 gene are co-deleted. Multiple alternatively spliced transcript variants have been described for this gene, but their full-length natures remain unknown.

Immunogen information

Gene ID:

4507

Uniprot

Q13126

Synonyms:

MTAP; BDMF; DMSFH; DMSMFH; HEL-249; LGMBF; MSAP; c86fus

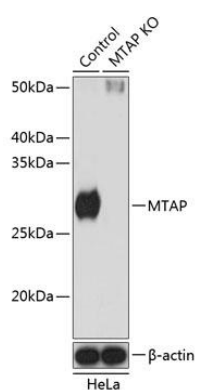
Immunogen:

Recombinant protein of human MTAP.

Storage:

Store at -20°C. Avoid freeze / thaw cycles. Buffer: PBS with 0.02% sodium azide, 50% glycerol, pH7.3.

Product Images



Western blot analysis of extracts from normal (control) and MTAP knockout (KO) HeLa cells, using MTAP antibody (CAB19981) at 1:1000 dilution. Secondary antibody: HRP Goat Anti-Rabbit IgG (H+L) (CABS014) at 1:10000 dilution. Lysates/proteins: 25ug per lane. Blocking buffer: 3% nonfat dry milk in TBST. Detection: ECL Basic Kit (CABM00020). Exposure time: 5s.