

# PSMD2 Rabbit Polyclonal Antibody



CAB1999

## Product Information

### Size:

20uL, 50uL, 100uL, 200uL

### Observed MW:

108kDa

### Calculated MW:

82kDa/85kDa/100kDa

### Applications:

WB IHC IF

### Reactivity:

Human, Mouse

## Antibody Information

### Recommended dilutions:

WB 1:500 - 1:2000 IHC 1:50  
- 1:200 IF 1:50 - 1:200

### Source:

Rabbit

### Isotype:

IgG

### Purification:

Affinity purification

## Protein Background

The 26S proteasome is a multicatalytic proteinase complex with a highly ordered structure composed of 2 complexes, a 20S core and a 19S regulator. The 20S core is composed of 4 rings of 28 non-identical subunits; 2 rings are composed of 7 alpha subunits and 2 rings are composed of 7 beta subunits. The 19S regulator is composed of a base, which contains 6 ATPase subunits and 2 non-ATPase subunits, and a lid, which contains up to 10 non-ATPase subunits. Proteasomes are distributed throughout eukaryotic cells at a high concentration and cleave peptides in an ATP/ubiquitin-dependent process in a non-lysosomal pathway. An essential function of a modified proteasome, the immunoproteasome, is the processing of class I MHC peptides. This gene encodes one of the non-ATPase subunits of the 19S regulator lid. In addition to participation in proteasome function, this subunit may also participate in the TNF signalling pathway since it interacts with the tumor necrosis factor type 1 receptor. A pseudogene has been identified on chromosome 1. Alternative splicing results in multiple transcript variants of this gene.

## Immunogen information

### Gene ID:

5708

### Uniprot

Q13200

### Synonyms:

PSMD2; P97; RPN1; S2; TRAP2

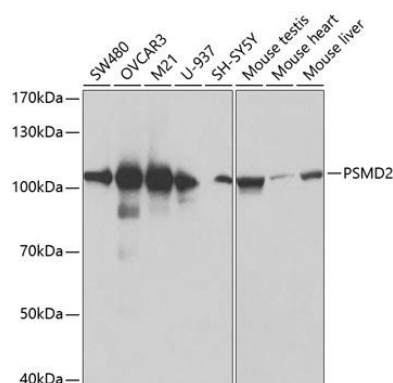
### Immunogen:

Recombinant fusion protein containing a sequence corresponding to amino acids 1-260 of human PSMD2 (NP\_002799.3).

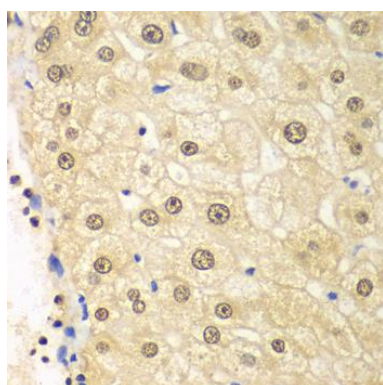
### Storage:

Store at -20°C. Avoid freeze / thaw cycles. Buffer: PBS with 0.02% sodium azide, 50% glycerol, pH7.3.

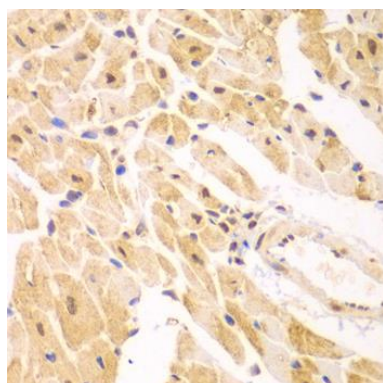
## Product Images



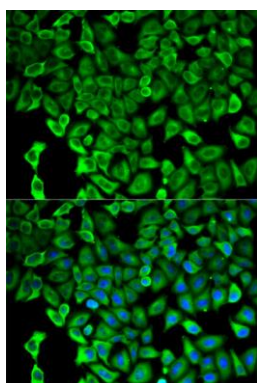
Western blot analysis of extracts of various cell lines, using PSMD2 antibody (CAB1999) at 1:600 dilution. Secondary antibody: HRP Goat Anti-Rabbit IgG (H+L) (CABS014) at 1:10000 dilution. Lysates/proteins: 25ug per lane. Blocking buffer: 3% nonfat dry milk in TBST. Detection: ECL Basic Kit (CABM00020). Exposure time: 90s.



Immunohistochemistry of paraffin-embedded human liver tissue showing PSMD2 staining (brown) and DAPI nuclear staining (blue).



Immunohistochemistry of paraffin-embedded mouse heart tissue showing PSMD2 staining (brown) and DAPI nuclear staining (blue).



Immunofluorescence analysis of HeLa cells showing PSMD2 staining (green) and DAPI nuclear staining (blue).