

[KO Validated] MCAM Rabbit Polyclonal Antibody

CAB19993



Product Information

Size:

20uL, 50uL, 100uL, 200uL

Observed MW:

120KDa

Calculated MW:

57kDa/71kDa

Applications:

WB IHC

Reactivity:

Human, Mouse

Antibody Information

Recommended dilutions:

WB 1:500 - 1:2000 IHC 1:50 - 1:200

Source:

Rabbit

Isotype:

IgG

Purification:

Affinity purification

Protein Background

Immunogen information

Gene ID:

4162

Uniprot

P43121

Synonyms:

MCAM; CD146; MUC18

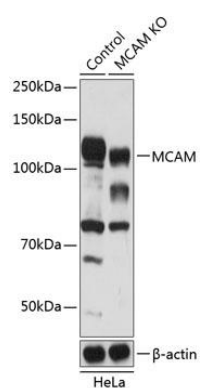
Immunogen:

Recombinant protein of human MCAM.

Storage:

Store at -20°C. Avoid freeze / thaw cycles. Buffer: PBS with 0.02% sodium azide, 50% glycerol, pH7.3.

Product Images



Western blot analysis of extracts from normal (control) and MCAM knockout (KO) HeLa cells, using MCAM antibody (CAB19993) at 1:1000 dilution. Secondary antibody: HRP Goat Anti-Rabbit IgG (H+L) (CABS014) at 1:10000 dilution. Lysates/proteins: 25ug per lane. Blocking buffer: 3% nonfat dry milk in TBST. Detection: ECL Basic Kit (CABM00020). Exposure time: 1s.