

**[KO Validated] ARL6IP1 Rabbit Polyclonal
Antibody
CAB19995**



Product Information

Size:

20uL, 50uL, 100uL, 200uL

Observed MW:

23KDa

Calculated MW:

Applications:

WB IHC IF

Reactivity:

Human, Mouse, Rat

Antibody Information

Recommended dilutions:

WB 1:500 - 1:2000 IHC 1:50
- 1:100 IF 1:50 - 1:100

Source:

Rabbit

Isotype:

IgG

Purification:

Affinity purification

Protein Background

This gene belongs to the ARL6ip family and encodes a transmembrane protein that is predominantly localized to intracytoplasmic membranes. It is highly expressed in early myeloid progenitor cells and thought to be involved in protein transport, membrane trafficking, or cell signaling during hematopoietic maturation. Mutations in this gene are associated with spastic paraplegia 61 (SPG61). Alternatively spliced transcript variants have been found for this gene.

Immunogen information

Gene ID:

23204

Uniprot

Q15041

Synonyms:

ARL6IP1; AIP1; ARL6IP; ARMER; SPG61

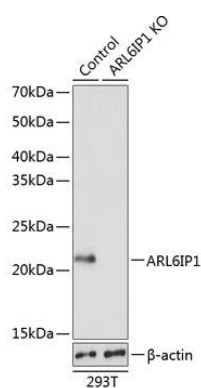
Immunogen:

A synthetic peptide of human ARL6IP1.

Storage:

Store at -20°C. Avoid freeze / thaw cycles. Buffer: PBS with 0.02% sodium azide, 50% glycerol, pH7.3.

Product Images



Western blot analysis of extracts from normal (control) and ARL6IP1 knockout (KO) 293T cells, using ARL6IP1 antibody (CAB19995) at 1:5000 dilution. Secondary antibody: HRP Goat Anti-Rabbit IgG (H+L) (CABS014) at 1:10000 dilution. Lysates/proteins: 25ug per lane. Blocking buffer: 3% nonfat dry milk in TBST. Detection: ECL Basic Kit (CABM00020). Exposure time: 30s.