

[KO Validated] DSG2 Rabbit Polyclonal Antibody



CAB19996

Product Information

Size:

20uL, 50uL, 100uL, 200uL

Observed MW:

150KDa

Calculated MW:

122kDa

Applications:

WB

Reactivity:

Human, Mouse, Rat

Antibody Information

Recommended dilutions:

WB 1:500 - 1:2000

Source:

Rabbit

Isotype:

IgG

Purification:

Affinity purification

Protein Background

This gene encodes a member of the desmoglein family and cadherin cell adhesion molecule superfamily of proteins. Desmogleins are calcium-binding transmembrane glycoprotein components of desmosomes, cell-cell junctions between epithelial, myocardial, and other cell types. The encoded preprotein is proteolytically processed to generate the mature glycoprotein. This gene is present in a gene cluster with other desmoglein gene family members on chromosome 18. Mutations in this gene have been associated with arrhythmogenic right ventricular dysplasia, familial, 10.

Immunogen information

Gene ID:

1829

Uniprot

Q14126

Synonyms:

DSG2; CDHF5; HDGC

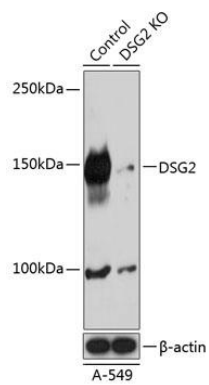
Immunogen:

Recombinant protein of human DSG2.

Storage:

Store at -20°C. Avoid freeze / thaw cycles. Buffer: PBS with 0.02% sodium azide, 50% glycerol, pH7.3.

Product Images



Western blot analysis of extracts from normal (control) and DSG2 knockout (KO) A-549 cells, using DSG2 antibody (CAB19996) at 1:3000 dilution. Secondary antibody: HRP Goat Anti-Rabbit IgG (H+L) (CABS014) at 1:10000 dilution. Lysates/proteins: 25ug per lane. Blocking buffer: 3% nonfat dry milk in TBST. Detection: ECL Basic Kit (CABM00020). Exposure time: 1s.