

**[KO Validated] CNPY2 Rabbit Polyclonal
Antibody
CAB20002**



Product Information

Size:

20uL, 50uL, 100uL, 200uL

Observed MW:

16KDa

Calculated MW:

9kDa/20kDa

Applications:

WB

Reactivity:

Human, Mouse, Rat

Antibody Information

Recommended dilutions:

WB 1:500 - 1:2000

Source:

Rabbit

Isotype:

IgG

Purification:

Affinity purification

Protein Background

Immunogen information

Gene ID:

10330

Uniprot

Q9Y2B0

Synonyms:

CNPY2; HP10390; MSAP; TMEM4; ZSIG9

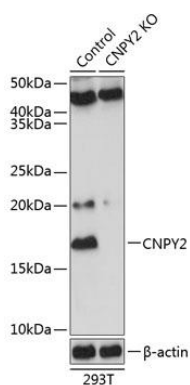
Immunogen:

Recombinant protein of human CNPY2.

Storage:

Store at -20°C. Avoid freeze / thaw cycles. Buffer: PBS with 0.02% sodium azide, 50% glycerol, pH7.3.

Product Images



Western blot analysis of extracts from normal (control) and CNPY2 knockout (KO) 293T cells, using CNPY2 antibody (CAB20002) at 1:1000 dilution. Secondary antibody: HRP Goat Anti-Rabbit IgG (H+L) (CABS014) at 1:10000 dilution. Lysates/proteins: 25ug per lane. Blocking buffer: 3% nonfat dry milk in TBST. Detection: ECL Basic Kit (CABM00020). Exposure time: 30s.