

# TET2 Mouse Monoclonal Antibody



**CAB20008**

---

## Product Information

### Size:

20uL, 50uL, 100uL, 200uL

### Observed MW:

260kDa

### Calculated MW:

130kDa/133kDa/223kDa

### Applications:

WB

### Reactivity:

Human, Mouse

## Protein Background

The protein encoded by this gene is a methylcytosine dioxygenase that catalyzes the conversion of methylcytosine to 5-hydroxymethylcytosine. The encoded protein is involved in myelopoiesis, and defects in this gene have been associated with several myeloproliferative disorders. Two variants encoding different isoforms have been found for this gene.

## Immunogen information

### Gene ID:

54790

### Uniprot

Q6N021

### Synonyms:

MDS; KIAA1546

## Antibody Information

### Recommended dilutions:

WB 1:500 - 1:2000

### Source:

Mouse

### Isotype:

IgG

### Purification:

Affinity purification

### Immunogen:

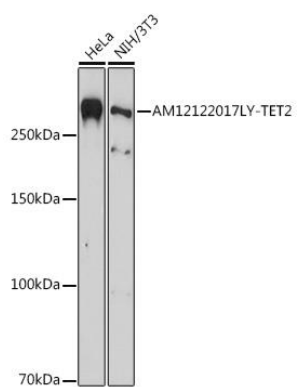
Recombinant protein of human TET2.

### Storage:

Store at -20°C. Avoid freeze / thaw cycles. Buffer: PBS with 0.02% sodium azide, 50% glycerol, pH7.3.

## Product Images

---



Western blot - TET2 Mouse mAb (CAB20008)