

FBXW11 Rabbit Polyclonal Antibody



CAB20010

Product Information

Size:

50uL, 100uL, 200uL

Observed MW:

62kDa

Calculated MW:

58kDa/60kDa/62kDa

Applications:

WB IF

Reactivity:

Human, Mouse, Rat

Antibody Information

Recommended dilutions:

WB 1:500 - 1:2000 IF 1:50 - 1:200

Source:

Rabbit

Isotype:

IgG

Purification:

Affinity purification

Protein Background

This gene encodes a member of the F-box protein family which is characterized by an approximately 40 amino acid motif, the F-box. The F-box proteins constitute one of the four subunits of ubiquitin protein ligase complex called SCFs (SKP1-cullin-F-box), which function in phosphorylation-dependent ubiquitination. The F-box proteins are divided into 3 classes: Fbws containing WD-40 domains, Fbls containing leucine-rich repeats, and Fbxs containing either different protein-protein interaction modules or no recognizable motifs. The protein encoded by this gene belongs to the Fbws class and, in addition to an F-box, contains multiple WD40 repeats. This gene contains at least 14 exons, and its alternative splicing generates 3 transcript variants diverging at the presence/absence of two alternate exons.

Immunogen information

Gene ID:

23291

Uniprot

Q9UKB1

Synonyms:

FBXW11; BTRC2; BTRCP2; FBW1B; FBXW1B; Fbw11; Hos

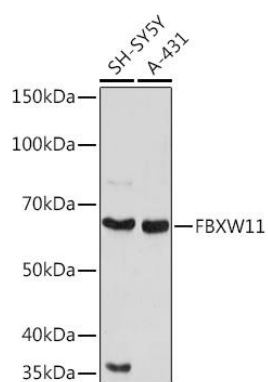
Immunogen:

A synthetic Peptide of human FBXW11.

Storage:

Store at -20°C. Avoid freeze / thaw cycles. Buffer: PBS with 0.02% sodium azide, 50% glycerol, pH7.3.

Product Images



Western blot - FBXW11 Rabbit pAb (CAB20010)