

SNRPB Rabbit Polyclonal Antibody



CAB2009

Product Information

Size:

20uL, 50uL, 100uL, 200uL

Observed MW:

30kDa

Calculated MW:

23kDa/24kDa/30kDa

Applications:

WB IHC

Reactivity:

Human, Mouse, Rat

Antibody Information

Recommended dilutions:

WB 1:500 - 1:2000 IHC 1:50 - 1:200

Source:

Rabbit

Isotype:

IgG

Purification:

Affinity purification

Protein Background

The protein encoded by this gene is one of several nuclear proteins that are found in common among U1, U2, U4/U6, and U5 small ribonucleoprotein particles (snRNPs). These snRNPs are involved in pre-mRNA splicing, and the encoded protein may also play a role in pre-mRNA splicing or snRNP structure. Autoantibodies from patients with systemic lupus erythematosus frequently recognize epitopes on the encoded protein. Two transcript variants encoding different isoforms (B and B') have been found for this gene.

Immunogen information

Gene ID:

6628

Uniprot

P14678

Synonyms:

SNRPB; CCMS; COD; SNRPB1; Sm-B/B; SmB/SmB; snRNP-B

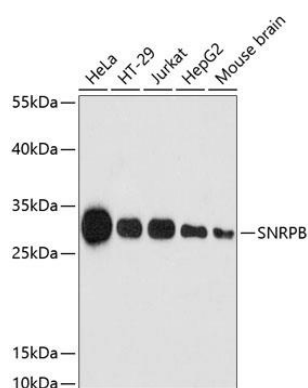
Immunogen:

A synthetic peptide corresponding to a sequence within amino acids 1-100 of human SNRPB (NP_003082.1).

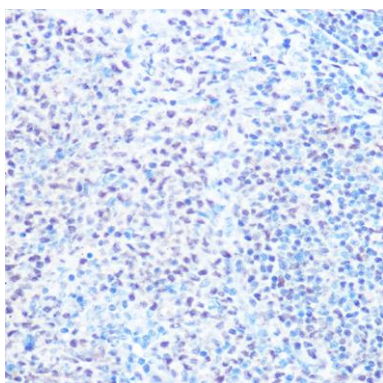
Storage:

Store at -20°C. Avoid freeze / thaw cycles. Buffer: PBS with 0.02% sodium azide, 50% glycerol, pH7.3.

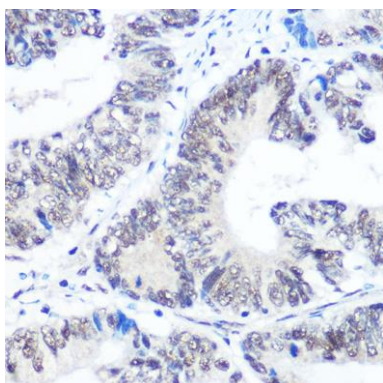
Product Images



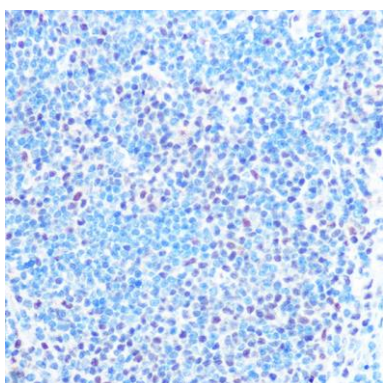
Western blot analysis of extracts of various cell lines, using SNRPB antibody (CAB2009) at 1:3000 dilution. Secondary antibody: HRP Goat Anti-Rabbit IgG (H+L) (CABS014) at 1:10000 dilution. Lysates/proteins: 25ug per lane. Blocking buffer: 3% nonfat dry milk in TBST. Detection: ECL Enhanced Kit (CABM00021). Exposure time: 180s.



Immunohistochemistry of paraffin-embedded rat spleen using SNRPB Rabbit pAb (CAB2009) at dilution of 1:100 (40x lens).



Immunohistochemistry of paraffin-embedded human colon carcinoma using SNRPB Rabbit pAb (CAB2009) at dilution of 1:100 (40x lens).



Immunohistochemistry of paraffin-embedded mouse spleen using SNRPB Rabbit pAb (CAB2009) at dilution of 1:100 (40x lens).