

DST Rabbit Polyclonal Antibody



CAB2013

Product Information

Size:

20uL, 50uL, 100uL, 200uL

Observed MW:

28Da

Calculated MW:

9kDa/25kDa/50kDa/102kDa/
306-860kDa

Applications:

WB, IHC

Reactivity:

Human, Mouse, Rat

Antibody Information

Recommended dilutions:

WB 1:500 - 1:2000
IHC 1:50 - 1:200

Source:

Rabbit

Isotype:

IgG

Purification:

Affinity purification

Protein Background

This gene encodes a member of the plakin protein family of adhesion junction plaque proteins. Multiple alternatively spliced transcript variants encoding distinct isoforms have been found for this gene, but the full-length nature of some variants has not been defined. It has been reported that some isoforms are expressed in neural and muscle tissue, anchoring neural intermediate filaments to the actin cytoskeleton, and some isoforms are expressed in epithelial tissue, anchoring keratin-containing intermediate filaments to hemidesmosomes. Consistent with the expression, mice defective for this gene show skin blistering and neurodegeneration.

Immunogen information

Gene ID:

667

Uniprot

Q03001

Synonyms:

DST; BP240; BPA; BPAG1; CATX-15; CATX15; D6S1101; DMH; DT;
EBSB2; HSAN6; MACF2; dystonin

Immunogen:

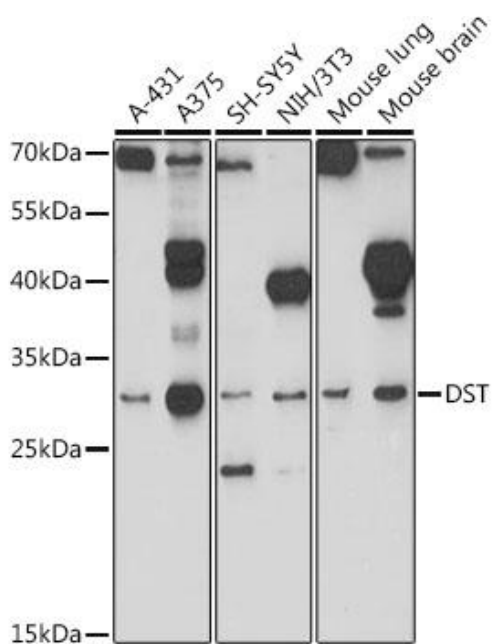
Recombinant fusion protein containing a sequence corresponding to amino acids 1-270 of human DST (NP_001714.1).

Storage:

Store at -20°C. Avoid freeze / thaw cycles.

Buffer: PBS with 0.02% sodium azide, 50% glycerol, pH7.3.

Product Images



Western blot analysis of extracts of various cell lines, using DST antibody (CAB2013) at 1:1000 dilution.

Secondary antibody: HRP Goat Anti-Rabbit IgG (H+L) (CABS014) at 1:10000 dilution.

Lysates/proteins: 25ug per lane.

Blocking buffer: 3% non-fat dry milk in TBST.

Detection: ECL Basic Kit (AbGn00020).

Exposure time: 300s.