

CBLB Rabbit Polyclonal Antibody



CAB2014

Product Information

Size:

20uL, 50uL, 100uL, 200uL

Observed MW:

109kDa

Calculated MW:

86kDa/90kDa/109kDa

Applications:

WB IHC

Reactivity:

Human, Mouse

Antibody Information

Recommended dilutions:

WB 1:500 - 1:2000 IHC 1:50
- 1:200

Source:

Rabbit

Isotype:

IgG

Purification:

Affinity purification

Protein Background

Immunogen information

Gene ID:

868

Uniprot

Q13191

Synonyms:

CBLB; Cbl-b; Nbla00127; RNF56

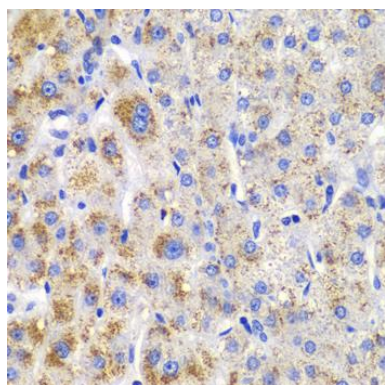
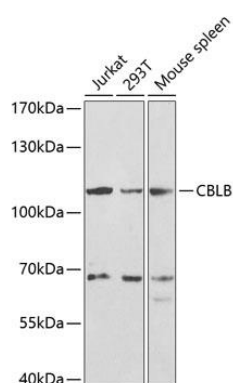
Immunogen:

Recombinant fusion protein containing a sequence corresponding to amino acids 1-350 of human CBLB (NP_733762.2).

Storage:

Store at -20°C. Avoid freeze / thaw cycles. Buffer: PBS with 0.02% sodium azide, 50% glycerol, pH7.3.

Product Images



Western blot analysis of extracts of various cell lines, using CBLB antibody (CAB2014) at 1:1000 dilution. Secondary antibody: HRP Goat Anti-Rabbit IgG (H+L) (CABS014) at 1:10000 dilution. Lysates/proteins: 25ug per lane. Blocking buffer: 3% nonfat dry milk in TBST.

Immunohistochemistry of paraffin-embedded human liver damage using CBLB antibody (CAB2014) at dilution of 1:200 (40x lens).