

# EIF5A Rabbit Polyclonal Antibody



CAB2016

## Product Information

### Size:

20uL, 50uL, 100uL, 200uL

### Observed MW:

17kDa

### Calculated MW:

16kDa/20kDa

### Applications:

WB IHC IF

### Reactivity:

Human, Mouse

## Antibody Information

### Recommended dilutions:

WB 1:500 - 1:2000 IHC 1:50  
- 1:200 IF 1:50 - 1:200

### Source:

Rabbit

### Isotype:

IgG

### Purification:

Affinity purification

## Protein Background

### Immunogen information

#### Gene ID:

1984

#### Uniprot

P63241

#### Synonyms:

EIF5A; EIF-5A; EIF5A1; eIF5AI

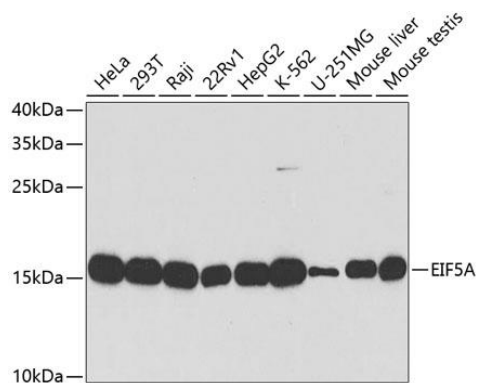
#### Immunogen:

Recombinant fusion protein containing a sequence corresponding to amino acids 1-154 of human EIF5A (NP\_001137234.1).

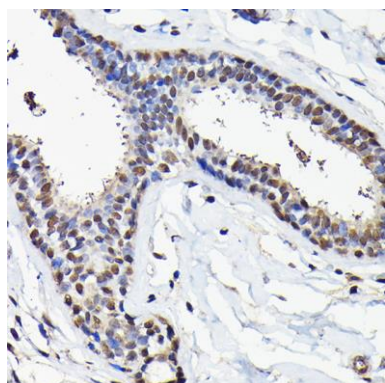
#### Storage:

Store at -20°C. Avoid freeze / thaw cycles. Buffer: PBS with 0.02% sodium azide, 50% glycerol, pH7.3.

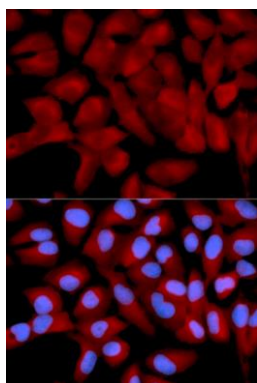
## Product Images



Western blot analysis of extracts of various cell lines, using EIF5A antibody (CAB2016) at 1:1000 dilution. Secondary antibody: HRP Goat Anti-Rabbit IgG (H+L) (CABS014) at 1:10000 dilution. Lysates/proteins: 25ug per lane. Blocking buffer: 3% nonfat dry milk in TBST.



Immunohistochemistry of paraffin-embedded human breast cancer using EIF5A Rabbit pAb (CAB2016) at dilution of 1:25 (40x lens).



Immunofluorescence analysis of U2OS cells using EIF5A antibody (CAB2016). Blue: DAPI for nuclear staining.