

MSX2 Rabbit Polyclonal Antibody



CAB2017

Product Information

Size:

20uL, 50uL, 100uL, 200uL

Observed MW:

29kDa

Calculated MW:

28kDa

Applications:

WB

Reactivity:

Human, Mouse, Rat

Protein Background

This gene encodes a member of the muscle segment homeobox gene family. The encoded protein is a transcriptional repressor whose normal activity may establish a balance between survival and apoptosis of neural crest-derived cells required for proper craniofacial morphogenesis. The encoded protein may also have a role in promoting cell growth under certain conditions and may be an important target for the RAS signaling pathways. Mutations in this gene are associated with parietal foramina 1 and craniosynostosis type 2.

Immunogen information

Gene ID:

4488

Uniprot

P35548

Synonyms:

MSX2; CRS2; FPP; HOX8; MSH; PFM; PFM1

Antibody Information

Recommended dilutions:

WB 1:500 - 1:2000

Source:

Rabbit

Isotype:

IgG

Purification:

Affinity purification

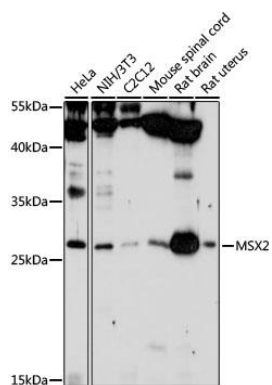
Immunogen:

Recombinant fusion protein containing a sequence corresponding to amino acids 1-267 of human MSX2 (NP_002440.2).

Storage:

Store at -20°C. Avoid freeze / thaw cycles. Buffer: PBS with 0.02% sodium azide, 50% glycerol, pH7.3.

Product Images



Western blot analysis of extracts of various cell lines, using MSX2 antibody (CAB2017) at 1:1000 dilution. Secondary antibody: HRP Goat Anti-Rabbit IgG (H+L) (CABS014) at 1:10000 dilution. Lysates/proteins: 25ug per lane. Blocking buffer: 3% nonfat dry milk in TBST. Detection: ECL Enhanced Kit (CABM00021). Exposure time: 10s.