

MT2A Rabbit Polyclonal Antibody



CAB2018

Product Information

Size:

20uL, 50uL, 100uL, 200uL

Observed MW:

15KDa

Calculated MW:

6kDa

Applications:

WB IHC

Reactivity:

Human, Mouse, Rat

Antibody Information

Recommended dilutions:

WB 1:500 - 1:2000 IHC 1:50
- 1:200

Source:

Rabbit

Isotype:

IgG

Purification:

Affinity purification

Protein Background

Immunogen information

Gene ID:

4502

Uniprot

P02795

Synonyms:

MT2A; MT2

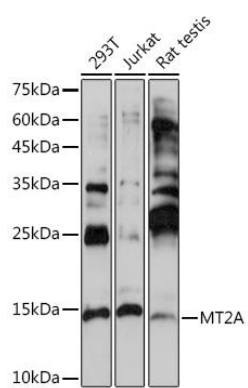
Immunogen:

Recombinant fusion protein containing a sequence corresponding to amino acids 1-61 of human MT2A (NP_005944.1).

Storage:

Store at -20°C. Avoid freeze / thaw cycles. Buffer: PBS with 0.02% sodium azide, 50% glycerol, pH7.3.

Product Images



Western blot - MT2A Rabbit pAb (CAB2018)