

4-1BB/CD137 Rabbit Polyclonal Antibody



CAB2025

Product Information

Size:

20uL, 50uL, 100uL, 200uL

Observed MW:

27kDa

Calculated MW:

27kDa

Applications:

WB IHC

Reactivity:

Human, Mouse, Rat

Protein Background

The protein encoded by this gene is a member of the TNF-receptor superfamily. This receptor contributes to the clonal expansion, survival, and development of T cells. It can also induce proliferation in peripheral monocytes, enhance T cell apoptosis induced by TCR/CD3 triggered activation, and regulate CD28 co-stimulation to promote Th1 cell responses. The expression of this receptor is induced by lymphocyte activation. TRAF adaptor proteins have been shown to bind to this receptor and transduce the signals leading to activation of NF-kappaB.

Immunogen information

Gene ID:

3604

Uniprot

Q07011

Synonyms:

TNFRSF9; 4-1BB; CD137; CDw137; ILA

Antibody Information

Recommended dilutions:

WB 1:500 - 1:2000 IHC 1:50 - 1:200

Source:

Rabbit

Isotype:

IgG

Purification:

Affinity purification

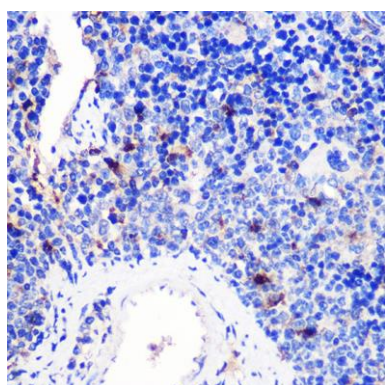
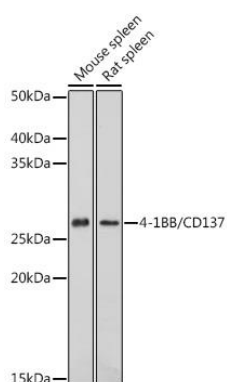
Immunogen:

A synthetic peptide corresponding to a sequence within amino acids 150-250 of human 4-1BB/CD137 (NP_001552.2).

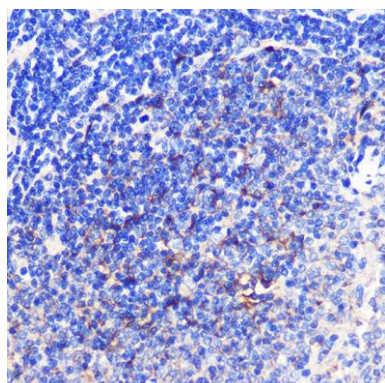
Storage:

Store at -20°C. Avoid freeze / thaw cycles. Buffer: PBS with 0.02% sodium azide, 50% glycerol, pH7.3.

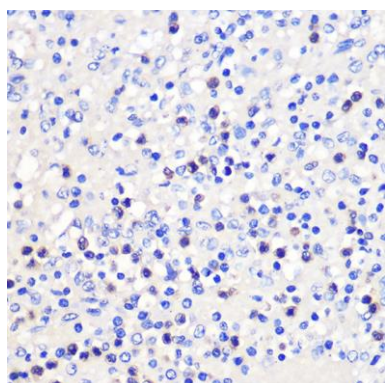
Product Images



Immunohistochemistry of paraffin-embedded Mouse spleen using 4-1BB/CD137 Rabbit pAb (CAB2025) at dilution of 1:100 (40x lens).



Immunohistochemistry of paraffin-embedded Rat spleen using 4-1BB/CD137 Rabbit pAb (CAB2025) at dilution of 1:100 (40x lens).



Immunohistochemistry of paraffin-embedded Human spleen using 4-1BB/CD137 Rabbit pAb (CAB2025) at dilution of 1:100 (40x lens).