

KPNA4 Rabbit Polyclonal Antibody



CAB2026

Product Information

Size:

20uL, 50uL, 100uL, 200uL

Observed MW:

58kDa

Calculated MW:

57kDa

Applications:

WB IHC IF

Reactivity:

Human, Mouse, Rat

Protein Background

The nuclear import of karyophilic proteins is directed by short amino acid sequences termed nuclear localization signals (NLSs). Karyopherins, or importins, are cytoplasmic proteins that recognize NLSs and dock NLS-containing proteins to the nuclear pore complex. The protein encoded by this gene shares the sequence similarity with *Xenopus* importin-alpha and *Saccharomyces cerevisiae* Srp1. This protein is found to interact with the NLSs of DNA helicase Q1 and SV40 T antigen.

Immunogen information

Gene ID:

3840

Uniprot

O00629

Synonyms:

KPNA4; IPOA3; QIP1; SRP3

Antibody Information

Recommended dilutions:

WB 1:500 - 1:2000 IHC 1:50
- 1:200 IF 1:50 - 1:200

Source:

Rabbit

Isotype:

IgG

Purification:

Affinity purification

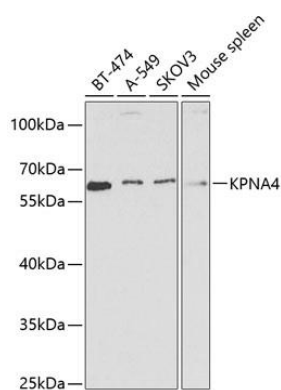
Immunogen:

Recombinant fusion protein containing a sequence corresponding to amino acids 1-240 of human KPNA4 (NP_002259.1).

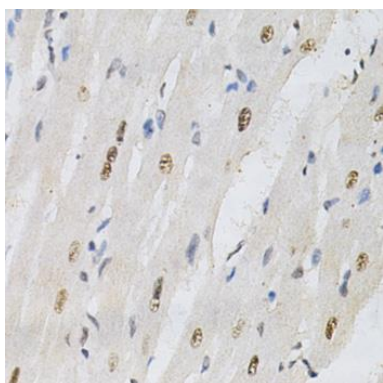
Storage:

Store at -20°C. Avoid freeze / thaw cycles. Buffer: PBS with 0.02% sodium azide, 50% glycerol, pH7.3.

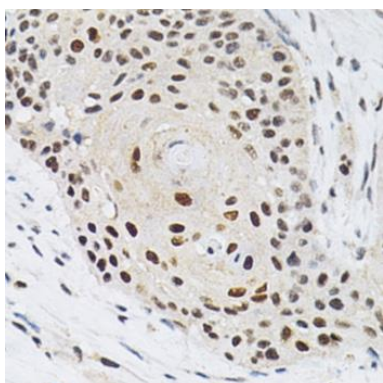
Product Images



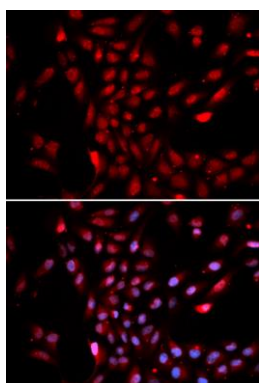
Western blot analysis of extracts of various cell lines, using KPNA4 antibody (CAB2026) at 1:1000 dilution. Secondary antibody: HRP Goat Anti-Rabbit IgG (H+L) (CABS014) at 1:10000 dilution. Lysates/proteins: 25ug per lane. Blocking buffer: 3% nonfat dry milk in TBST.



Immunohistochemistry of paraffin-embedded rat heart using KPNA4 Antibody (CAB2026) at dilution of 1:200 (40x lens).



Immunohistochemistry of paraffin-embedded human esophageal cancer using KPNA4 Antibody (CAB2026) at dilution of 1:200 (40x lens).



Immunofluorescence analysis of U2OS cells using KPNA4 antibody (CAB2026). Blue: DAPI for nuclear staining.