

[KO Validated] NT5E / CD73 Rabbit Polyclonal Antibody

CAB2029



Product Information

Size:

20uL, 50uL, 100uL, 200uL

Observed MW:

69kDa/75kDa

Calculated MW:

57kDa/63kDa

Applications:

WB IHC IF

Reactivity:

Human, Mouse, Rat

Protein Background

The protein encoded by this gene is a plasma membrane protein that catalyzes the conversion of extracellular nucleotides to membrane-permeable nucleosides. The encoded protein is used as a determinant of lymphocyte differentiation. Defects in this gene can lead to the calcification of joints and arteries. Two transcript variants encoding different isoforms have been found for this gene.

Immunogen information

Gene ID:

4907

Uniprot

P21589

Synonyms:

NT5E; CALJA; CD73; E5NT; NT; NT5; NTE; eN; eNT

Antibody Information

Recommended dilutions:

WB 1:500 - 1:2000 IHC 1:50
- 1:200 IF 1:50 - 1:200

Source:

Rabbit

Isotype:

IgG

Purification:

Affinity purification

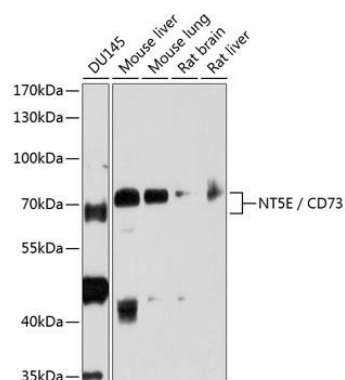
Immunogen:

Recombinant fusion protein containing a sequence corresponding to amino acids 290-550 of human NT5E / CD73 (NP_002517.1).

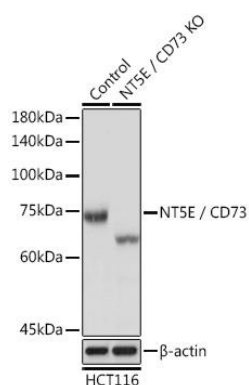
Storage:

Store at -20°C. Avoid freeze / thaw cycles. Buffer: PBS with 0.02% sodium azide, 50% glycerol, pH7.3.

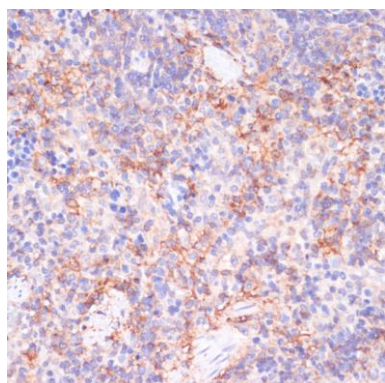
Product Images



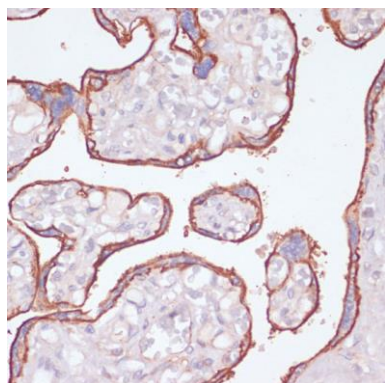
Western blot analysis of extracts of various cell lines, using NT5E / CD73 antibody (CAB2029) at 1:1000 dilution. Secondary antibody: HRP Goat Anti-Rabbit IgG (H+L) (CABS014) at 1:10000 dilution. Lysates/proteins: 25ug per lane. Blocking buffer: 3% nonfat dry milk in TBST. Detection: ECL Basic Kit (CABM00020). Exposure time: 30s.



Western blot analysis of extracts from normal (control) and NT5E / CD73 Rabbit pAb knockout (KO) HCT116 cells, using NT5E / CD73 Rabbit pAb antibody (CAB2029) at 1:3000 dilution. Secondary antibody: HRP Goat Anti-Rabbit IgG (H+L) (CABS014) at 1:10000 dilution. Lysates/proteins: 25ug per lane. Blocking buffer: 3% nonfat dry milk in TBST. Detection: ECL Basic Kit (CABM00020). Exposure time: 10s.



Immunohistochemistry of paraffin-embedded rat spleen using NT5E/CD73 antibody (CAB2029) at dilution of 1:200 (40x lens).



Immunohistochemistry of paraffin-embedded human placenta using NT5E/CD73 antibody (CAB2029) at dilution of 1:200 (40x lens).