

# EXT1 Rabbit Polyclonal Antibody



CAB2030

---

## Product Information

### Size:

20uL, 50uL, 100uL, 200uL

### Observed MW:

86kDa

### Calculated MW:

86kDa

### Applications:

WB IF

### Reactivity:

Human, Mouse

## Protein Background

This gene encodes an endoplasmic reticulum-resident type II transmembrane glycosyltransferase involved in the chain elongation step of heparan sulfate biosynthesis. Mutations in this gene cause the type I form of multiple exostoses.

## Immunogen information

### Gene ID:

2131

### Uniprot

Q16394

### Synonyms:

EXT1; EXT; LGCR; LGS; TRPS2; TTV

## Antibody Information

### Recommended dilutions:

WB 1:500 - 1:2000 IF 1:10 - 1:100

### Source:

Rabbit

### Isotype:

IgG

### Purification:

Affinity purification

### Immunogen:

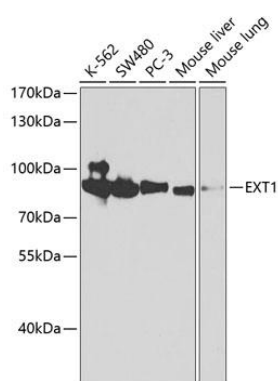
Recombinant fusion protein containing a sequence corresponding to amino acids 467-746 of human EXT1 (NP\_000118.2).

### Storage:

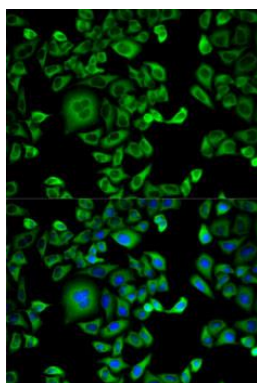
Store at -20°C. Avoid freeze / thaw cycles. Buffer: PBS with 0.02% sodium azide, 50% glycerol, pH7.3.

## Product Images

---



Western blot analysis of extracts of various cell lines, using EXT1 antibody (CAB2030) at 1:1000 dilution. Secondary antibody: HRP Goat Anti-Rabbit IgG (H+L) (CABS014) at 1:10000 dilution. Lysates/proteins: 25ug per lane. Blocking buffer: 3% nonfat dry milk in TBST.



Immunofluorescence analysis of HeLa cells using EXT1 antibody (CAB2030). Blue: DAPI for nuclear staining.