

# CLDN7 Rabbit Polyclonal Antibody



CAB2035

## Product Information

### Size:

20uL, 50uL, 100uL, 200uL

### Observed MW:

29kDa

### Calculated MW:

16kDa/22kDa

### Applications:

WB

### Reactivity:

Human, Mouse, Rat

## Antibody Information

### Recommended dilutions:

WB 1:500 - 1:2000

### Source:

Rabbit

### Isotype:

IgG

### Purification:

Affinity purification

## Protein Background

This gene encodes a member of the claudin family. Claudins are integral membrane proteins and components of tight junction strands. Tight junction strands serve as a physical barrier to prevent solutes and water from passing freely through the paracellular space between epithelial or endothelial cell sheets, and also play critical roles in maintaining cell polarity and signal transductions. Differential expression of this gene has been observed in different types of malignancies, including breast cancer, ovarian cancer, hepatocellular carcinomas, urinary tumors, prostate cancer, lung cancer, head and neck cancers, thyroid carcinomas, etc.. Alternatively spliced transcript variants encoding different isoforms have been found.

## Immunogen information

### Gene ID:

1366

### Uniprot

O95471

### Synonyms:

CLDN7; CEPTRL2; CLDN-7; CPETRL2; Hs.84359; claudin-1; claudin-7

### Immunogen:

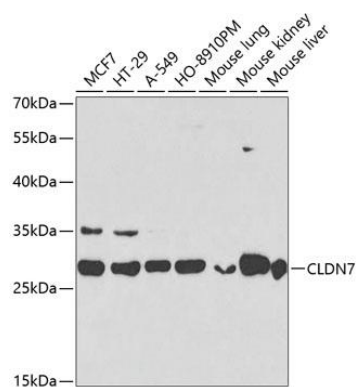
Recombinant fusion protein containing a sequence corresponding to amino acids 29-211 of human CLDN7 (NP\_001298.3).

### Storage:

Store at -20°C. Avoid freeze / thaw cycles. Buffer: PBS with 0.02% sodium azide, 50% glycerol, pH7.3.

## Product Images

---



Western blot analysis of extracts of various cell lines, using CLDN7 antibody (CAB2035) at 1:1000 dilution. Secondary antibody: HRP Goat Anti-Rabbit IgG (H+L) (CABS014) at 1:10000 dilution. Lysates/proteins: 25ug per lane. Blocking buffer: 3% nonfat dry milk in TBST.