

SLAMF1 Rabbit Polyclonal Antibody



CAB2044

Product Information

Size:

20uL, 50uL, 100uL, 200uL

Observed MW:

37kDa/65kDa

Calculated MW:

33kDa/37kDa/40kDa

Applications:

WB

Reactivity:

Human, Mouse

Antibody Information

Recommended dilutions:

WB 1:500 - 1:2000

Source:

Rabbit

Isotype:

IgG

Purification:

Affinity purification

Protein Background

Immunogen information

Gene ID:

6504

Uniprot

Q13291

Synonyms:

SLAMF1; CD150; CDw150; SLAM

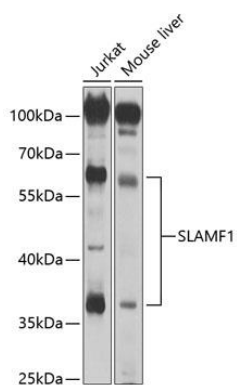
Immunogen:

Recombinant fusion protein containing a sequence corresponding to amino acids 21-237 of human SLAMF1 (NP_003028.1).

Storage:

Store at -20°C. Avoid freeze / thaw cycles. Buffer: PBS with 0.02% sodium azide, 50% glycerol, pH7.3.

Product Images



Western blot analysis of extracts of various cell lines, using SLAMF1 antibody (CAB2044) at 1:1000 dilution. Secondary antibody: HRP Goat Anti-Rabbit IgG (H+L) (CABS014) at 1:10000 dilution. Lysates/proteins: 25ug per lane. Blocking buffer: 3% nonfat dry milk in TBST. Detection: ECL Basic Kit (CABM00020). Exposure time: 5s.