

CD69 Rabbit Polyclonal Antibody



CAB2045

Product Information

Size:

20uL, 50uL, 100uL, 200uL

Observed MW:

25-45KDa

Calculated MW:

22kDa

Applications:

WB IF

Reactivity:

Human, Mouse, Rat

Protein Background

This gene encodes a member of the calcium dependent lectin superfamily of type II transmembrane receptors. Expression of the encoded protein is induced upon activation of T lymphocytes, and may play a role in proliferation. Furthermore, the protein may act to transmit signals in natural killer cells and platelets.

Immunogen information

Gene ID:

969

Uniprot

Q07108

Synonyms:

CD69; AIM; BL-AC/P26; CLEC2C; EA1; GP32/28; MLR-3

Antibody Information

Recommended dilutions:

WB 1:500 - 1:2000 IF 1:50 - 1:100

Source:

Rabbit

Isotype:

IgG

Purification:

Affinity purification

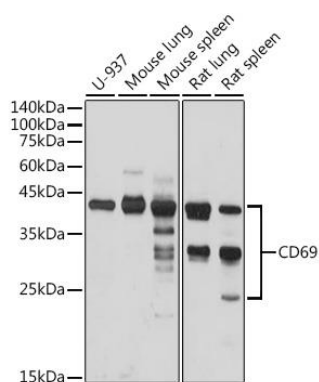
Immunogen:

Recombinant fusion protein containing a sequence corresponding to amino acids 62-199 of human CD69 (NP_001772.1).

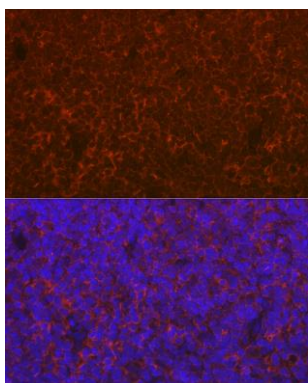
Storage:

Store at -20°C. Avoid freeze / thaw cycles. Buffer: PBS with 0.02% sodium azide, 50% glycerol, pH7.3.

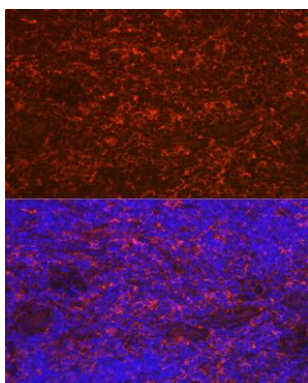
Product Images



Western blot analysis of extracts of various cell lines, using CD69 antibody (CAB2045) at 1:1000 dilution. Secondary antibody: HRP Goat Anti-Rabbit IgG (H+L) (CABS014) at 1:10000 dilution. Lysates/proteins: 25ug per lane. Blocking buffer: 3% nonfat dry milk in TBST. Detection: ECL Basic Kit (CABM00020). Exposure time: 10s.



Immunofluorescence analysis of rat thymus using CD69 Rabbit pAb (CAB2045) at dilution of 1:100 (40x lens). Blue: DAPI for nuclear staining.



Immunofluorescence analysis of mouse thymus using CD69 Rabbit pAb (CAB2045) at dilution of 1:100 (40x lens). Blue: DAPI for nuclear staining.