

KLK3 Rabbit Polyclonal Antibody



CAB2052

Product Information

Size:

20uL, 50uL, 100uL, 200uL

Observed MW:

34kDa

Calculated MW:

7kDa/23kDa/25kDa/26kDa/28kDa

Applications:

WB IHC IF IP

Reactivity:

Human

Antibody Information

Recommended dilutions:

WB 1:500 - 1:2000 IHC 1:50
- 1:100 IF 1:50 - 1:200 IP
1:50 - 1:200

Source:

Rabbit

Isotype:

IgG

Purification:

Affinity purification

Protein Background

Kallikreins are a subgroup of serine proteases having diverse physiological functions. Growing evidence suggests that many kallikreins are implicated in carcinogenesis and some have potential as novel cancer and other disease biomarkers. This gene is one of the fifteen kallikrein subfamily members located in a cluster on chromosome 19. Its protein product is a protease present in seminal plasma. It is thought to function normally in the liquefaction of seminal coagulum, presumably by hydrolysis of the high molecular mass seminal vesicle protein. Serum level of this protein, called PSA in the clinical setting, is useful in the diagnosis and monitoring of prostatic carcinoma. Alternate splicing of this gene generates several transcript variants encoding different isoforms.

Immunogen information

Gene ID:

354

Uniprot

P07288

Synonyms:

KLK3; APS; KLK2A1; PSA; hK3

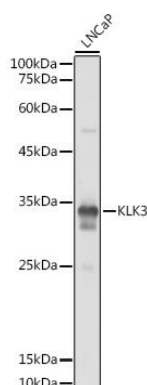
Immunogen:

A synthetic peptide corresponding to a sequence within amino acids 1-100 of human KLK3 (NP_001639.1).

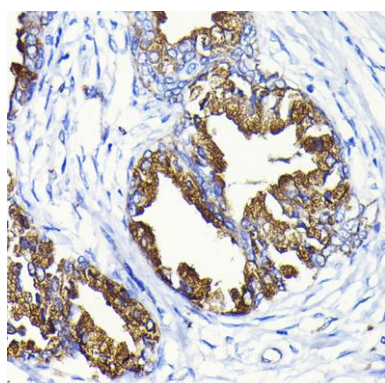
Storage:

Store at -20°C. Avoid freeze / thaw cycles. Buffer: PBS with 0.02% sodium azide, 50% glycerol, pH7.3.

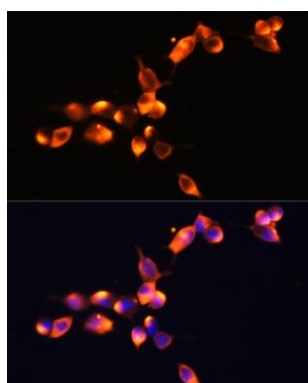
Product Images



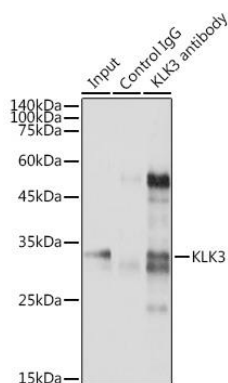
Western blot analysis of extracts of LNCaP cells, using KLK3 antibody (CAB2052) at 1:1000 dilution. Secondary antibody: HRP Goat Anti-Rabbit IgG (H+L) (CABS014) at 1:10000 dilution. Lysates/proteins: 25ug per lane. Blocking buffer: 3% nonfat dry milk in TBST. Detection: ECL Basic Kit (CABM00020). Exposure time: 1s.



Immunohistochemistry of paraffin-embedded human prostate cancer using KLK3 Rabbit pAb (CAB2052) at dilution of 1:100 (40x lens).



Immunofluorescence analysis of LNCaP cells using KLK3 Polyclonal Antibody (CAB2052) at dilution of 1:100 (40x lens). Blue: DAPI for nuclear staining.



Immunoprecipitation analysis of 300ug extracts of LNCaP cells using 3ug KLK3 antibody (CAB2052). Western blot was performed from the immunoprecipitate using KLK3 antibody (CAB2052) at a dilution of 1:2000.