

CD247 Rabbit Polyclonal Antibody



CAB2058

Product Information

Size:

20uL, 50uL, 100uL, 200uL

Observed MW:

17kDa

Calculated MW:

18kDa

Applications:

WB IHC IF

Reactivity:

Human, Mouse, Rat

Protein Background

The protein encoded by this gene is T-cell receptor zeta, which together with T-cell receptor alpha/beta and gamma/delta heterodimers, and with CD3-gamma, -delta and -epsilon, forms the T-cell receptor-CD3 complex. The zeta chain plays an important role in coupling antigen recognition to several intracellular signal-transduction pathways. Low expression of the antigen results in impaired immune response. Two alternatively spliced transcript variants encoding distinct isoforms have been found for this gene.

Immunogen information

Gene ID:

919

Uniprot

P20963

Synonyms:

CD247; CD3-ZETA; CD3H; CD3Q; CD3Z; IMD25; T3Z; TCRZ

Antibody Information

Recommended dilutions:

WB 1:500 - 1:2000 IHC 1:50
- 1:200 IF 1:50 - 1:200

Source:

Rabbit

Isotype:

IgG

Purification:

Affinity purification

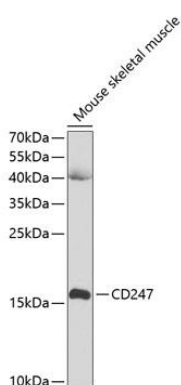
Immunogen:

Recombinant fusion protein containing a sequence corresponding to amino acids 50-164 of human CD247 (NP_932170.1).

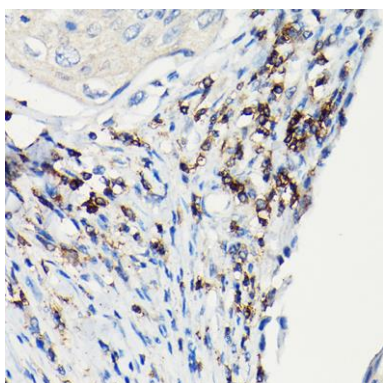
Storage:

Store at -20°C. Avoid freeze / thaw cycles. Buffer: PBS with 0.02% sodium azide, 50% glycerol, pH7.3.

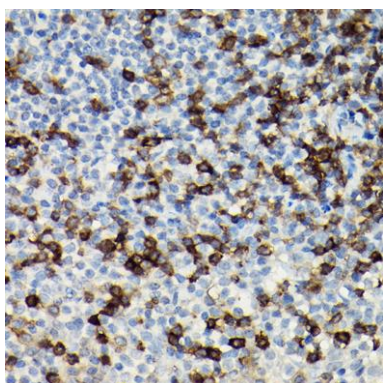
Product Images



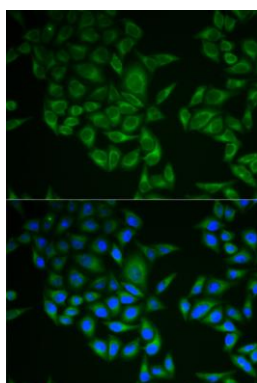
Western blot analysis of extracts of mouse skeletal muscle, using CD247 antibody (CAB2058) at 1:1000 dilution. Secondary antibody: HRP Goat Anti-Rabbit IgG (H+L) (CABS014) at 1:10000 dilution. Lysates/proteins: 25ug per lane. Blocking buffer: 3% nonfat dry milk in TBST.



Immunohistochemistry of paraffin-embedded Human esophageal cancer using CD247 antibody (CAB2058) at dilution of 1:100 (40x lens).



Immunohistochemistry of paraffin-embedded Human tonsil using CD247 antibody (CAB2058) at dilution of 1:100 (40x lens).



Immunofluorescence analysis of A549 cells using CD247 antibody (CAB2058). Blue: DAPI for nuclear staining.