

SIGLEC3/CD33 Rabbit Polyclonal Antibody



CAB2059

Product Information

Size:

20uL, 50uL, 100uL, 200uL

Observed MW:

70kDa

Calculated MW:

25kDa/33kDa/39kDa

Applications:

WB IHC IF

Reactivity:

Human, Mouse, Rat

Antibody Information

Recommended dilutions:

WB 1:500 - 1:2000 IHC 1:50
- 1:200 IF 1:50 - 1:200

Source:

Rabbit

Isotype:

IgG

Purification:

Affinity purification

Protein Background

Immunogen information

Gene ID:

945

Uniprot

P20138

Synonyms:

CD33; SIGLEC-3; SIGLEC3; p67

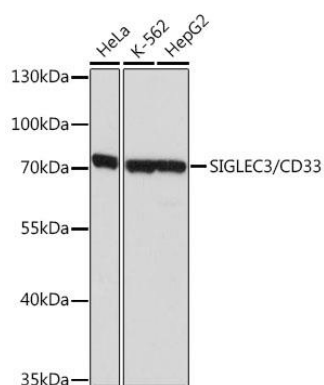
Immunogen:

Recombinant fusion protein containing a sequence corresponding to amino acids 49-259 of human SIGLEC3/CD33 (NP_001763.3).

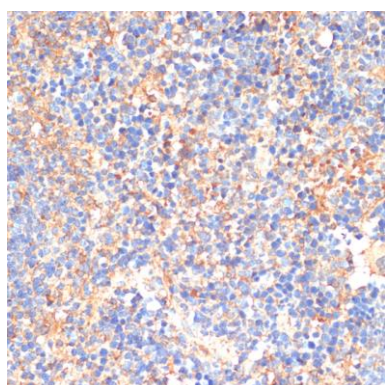
Storage:

Store at -20°C. Avoid freeze / thaw cycles. Buffer: PBS with 0.02% sodium azide, 50% glycerol, pH7.3.

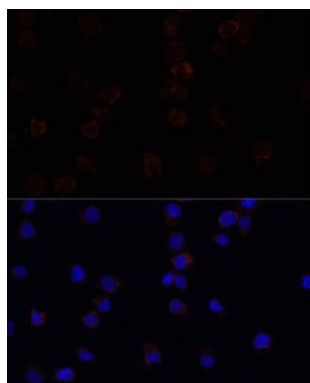
Product Images



Western blot analysis of extracts of various cell lines, using SIGLEC3/CD33 antibody (CAB2059) at 1:1000 dilution. Secondary antibody: HRP Goat Anti-Rabbit IgG (H+L) (CABS014) at 1:10000 dilution. Lysates/proteins: 25ug per lane. Blocking buffer: 3% nonfat dry milk in TBST. Detection: ECL Basic Kit (CABM00020). Exposure time: 5s.



Immunohistochemistry of paraffin-embedded mouse spleen using SIGLEC3/CD33 antibody (CAB2059) at dilution of 1:200 (40x lens).



Immunofluorescence analysis of THP-1 cells using SIGLEC3/CD33 antibody (CAB2059) at dilution of 1:100. Blue: DAPI for nuclear staining.