

IKKAlpha Rabbit Polyclonal Antibody



CAB2062

Product Information

Size:

20uL, 50uL, 100uL, 200uL

Observed MW:

85kDa

Calculated MW:

84kDa

Applications:

WB IHC IF IP

Reactivity:

Human, Mouse, Rat

Protein Background

This gene encodes a member of the serine/threonine protein kinase family. The encoded protein, a component of a cytokine-activated protein complex that is an inhibitor of the essential transcription factor NF-kappa-B complex, phosphorylates sites that trigger the degradation of the inhibitor via the ubiquination pathway, thereby activating the transcription factor.

Immunogen information

Gene ID:

1147

Uniprot

O15111

Synonyms:

CHUK; IKBKA; IKK-alpha; IKK1; IKKA; NFKBIKA; TCF16; IKK alpha

Antibody Information

Recommended dilutions:

WB 1:500 - 1:2000 IHC 1:50
- 1:200 IF 1:50 - 1:200 IP
1:50 - 1:200

Source:

Rabbit

Isotype:

IgG

Purification:

Affinity purification

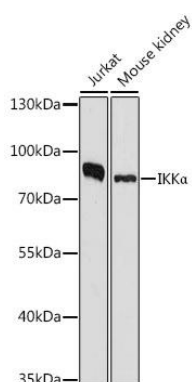
Immunogen:

A synthetic peptide corresponding to a sequence within amino acids 650 to the C-terminus of human IKKAlpha (NP_001269.3).

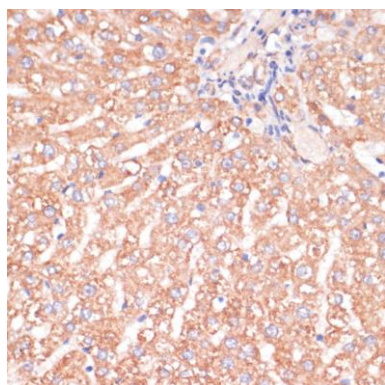
Storage:

Store at -20°C. Avoid freeze / thaw cycles. Buffer: PBS with 0.02% sodium azide, 50% glycerol, pH7.3.

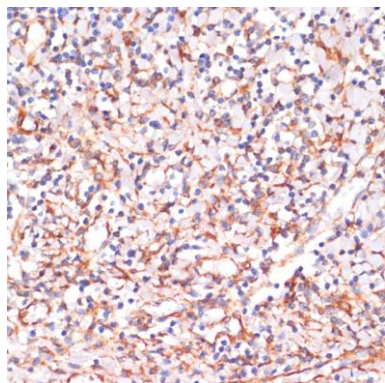
Product Images



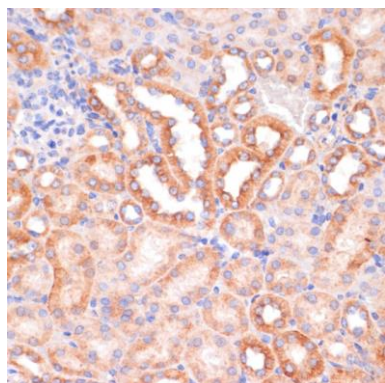
Western blot analysis of extracts of various cell lines, using IKK α antibody (CAB2062) at 1:1000 dilution. Secondary antibody: HRP Goat Anti-Rabbit IgG (H+L) (CABS014) at 1:10000 dilution. Lysates/proteins: 25ug per lane. Blocking buffer: 3% nonfat dry milk in TBST. Detection: ECL Enhanced Kit (CABM00021). Exposure time: 180s.



Immunohistochemistry of paraffin-embedded rat liver using CHUK antibody (CAB2062) at dilution of 1:100 (40x lens).



Immunohistochemistry of paraffin-embedded human tonsil using CHUK antibody (CAB2062) at dilution of 1:100 (40x lens).



Immunohistochemistry of paraffin-embedded mouse kidney using CHUK antibody (CAB2062) at dilution of 1:100 (40x lens).