

GNA15 Rabbit Polyclonal Antibody



CAB2080

Product Information

Size:

20uL, 50uL, 100uL, 200uL

Observed MW:

44kDa

Calculated MW:

43kDa

Applications:

WB IHC

Reactivity:

Human, Mouse

Antibody Information

Recommended dilutions:

WB 1:500 - 1:2000 IHC 1:50
- 1:200

Source:

Rabbit

Isotype:

IgG

Purification:

Affinity purification

Protein Background

Immunogen information

Gene ID:

2769

Uniprot

P30679

Synonyms:

GNA15; GNA16

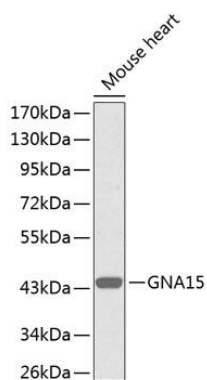
Immunogen:

Recombinant fusion protein containing a sequence corresponding to amino acids 1-374 of human GNA15 (NP_002059.3).

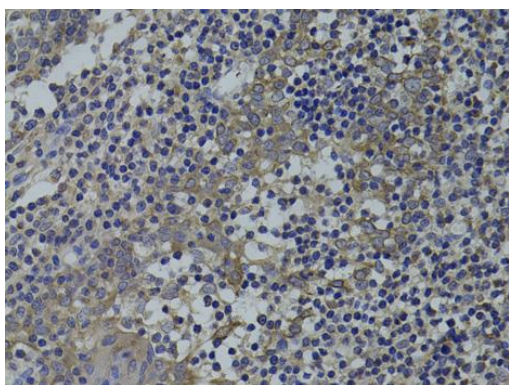
Storage:

Store at -20°C. Avoid freeze / thaw cycles. Buffer: PBS with 0.02% sodium azide, 50% glycerol, pH7.3.

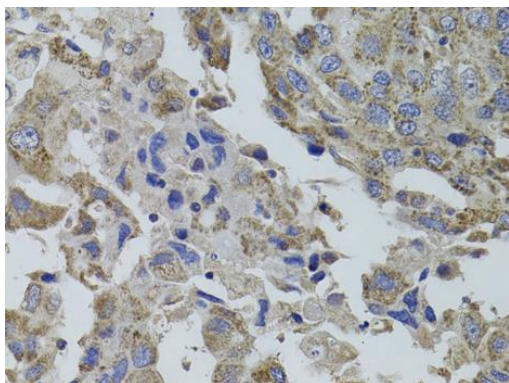
Product Images



Western blot analysis of extracts of mouse heart, using GNA15 antibody (CAB2080). Secondary antibody: HRP Goat Anti-Rabbit IgG (H+L) (CABS014) at 1:10000 dilution. Lysates/proteins: 25ug per lane. Blocking buffer: 3% nonfat dry milk in TBST.



Immunohistochemistry of paraffin-embedded human tonsil using GNA15 antibody (CAB2080) at dilution of 1:100 (40x lens).



Immunohistochemistry of paraffin-embedded human breast cancer using GNA15 antibody (CAB2080) at dilution of 1:100 (40x lens).