

GSK3Beta Rabbit Polyclonal Antibody



CAB2081

Product Information

Size:

20uL, 50uL, 100uL, 200uL

Observed MW:

46kDa

Calculated MW:

46kDa/48kDa

Applications:

WB IHC IF IP

Reactivity:

Human, Mouse, Rat

Protein Background

The protein encoded by this gene is a serine-threonine kinase, belonging to the glycogen synthase kinase subfamily. It is involved in energy metabolism, neuronal cell development, and body pattern formation. Polymorphisms in this gene have been implicated in modifying risk of Parkinson disease, and studies in mice show that overexpression of this gene may be relevant to the pathogenesis of Alzheimer disease. Alternatively spliced transcript variants encoding different isoforms have been found for this gene.

Immunogen information

Gene ID:

2932

Uniprot

P49841

Synonyms:

GSK3B; gsk-3Beta

Antibody Information

Recommended dilutions:

WB 1:500 - 1:2000 IHC 1:50
- 1:200 IF 1:50 - 1:200 IP
1:50 - 1:200

Source:

Rabbit

Isotype:

IgG

Purification:

Affinity purification

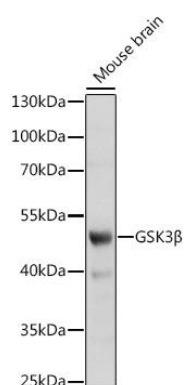
Immunogen:

A synthetic peptide of human GSK3Beta

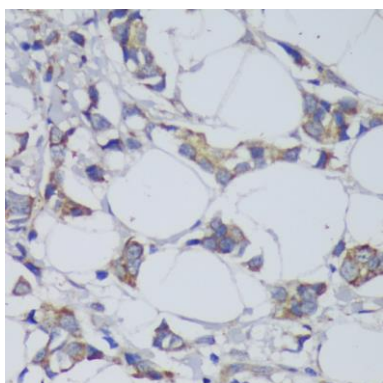
Storage:

Store at -20°C. Avoid freeze / thaw cycles. Buffer: PBS with 0.02% sodium azide, 50% glycerol, pH7.3.

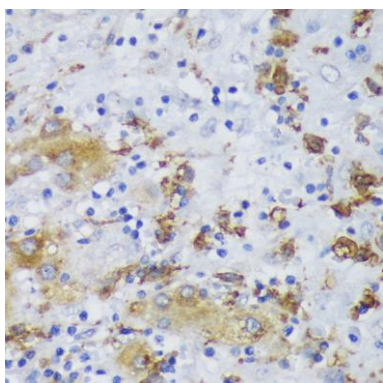
Product Images



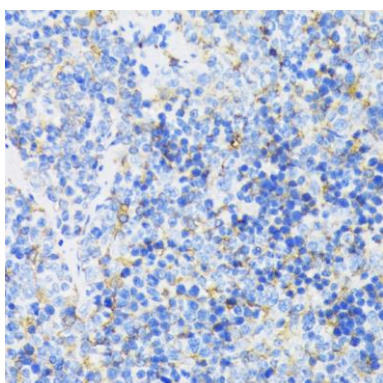
Western blot analysis of extracts of mouse brain, using GSK3beta antibody (CAB2081) at 1:1000 dilution. Secondary antibody: HRP Goat Anti-Rabbit IgG (H+L) (CABS014) at 1:10000 dilution. Lysates/proteins: 25ug per lane. Blocking buffer: 3% nonfat dry milk in TBST. Detection: ECL Basic Kit (CABM00020). Exposure time: 90s.



Immunohistochemistry of paraffin-embedded human mammary cancer using GSK3 beta antibody (CAB2081) at dilution of 1:200 (40x lens).



Immunohistochemistry of paraffin-embedded human liver cancer using GSK3b antibody (CAB2081) at dilution of 1:200 (40x lens).



Immunohistochemistry of paraffin-embedded mouse spleen using GSK3b antibody (CAB2081) at dilution of 1:200 (40x lens).