

# HNF4A Rabbit Polyclonal Antibody



CAB2085

## Product Information

### Size:

20uL, 50uL, 100uL, 200uL

### Observed MW:

52kDa

### Calculated MW:

43-56kDa

### Applications:

WB IHC

### Reactivity:

Human, Mouse, Rat

## Antibody Information

### Recommended dilutions:

WB 1:500 - 1:2000 IHC 1:50  
- 1:200

### Source:

Rabbit

### Isotype:

IgG

### Purification:

Affinity purification

## Protein Background

The protein encoded by this gene is a nuclear transcription factor which binds DNA as a homodimer. The encoded protein controls the expression of several genes, including hepatocyte nuclear factor 1 alpha, a transcription factor which regulates the expression of several hepatic genes. This gene may play a role in development of the liver, kidney, and intestines. Mutations in this gene have been associated with monogenic autosomal dominant non-insulin-dependent diabetes mellitus type I. Alternative splicing of this gene results in multiple transcript variants encoding several different isoforms.

## Immunogen information

### Gene ID:

3172

### Uniprot

P41235

### Synonyms:

HNF4A; FRTS4; HNF4; HNF4a7; HNF4a8; HNF4a9; HNF4alpha;  
MODY; MODY1; NR2A1; NR2A21; TCF; TCF14

### Immunogen:

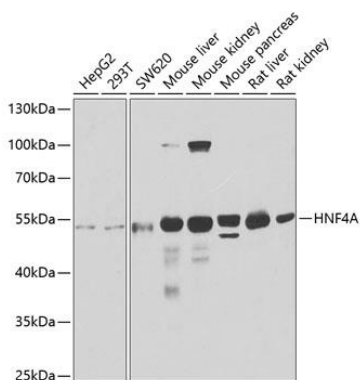
A synthetic peptide corresponding to a sequence within amino acids 200-300 of human HNF4A (NP\_000448.3).

### Storage:

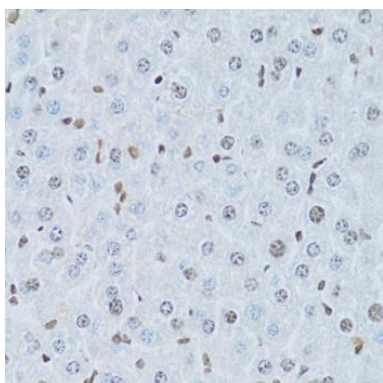
Store at -20°C. Avoid freeze / thaw cycles. Buffer: PBS with 0.02% sodium azide, 50% glycerol, pH7.3.

## Product Images

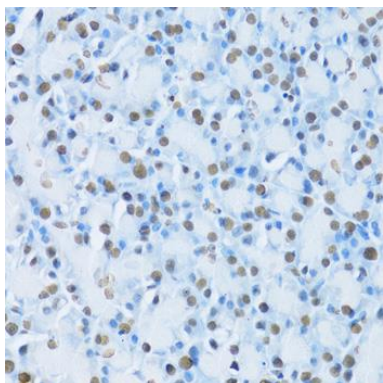
---



Western blot analysis of extracts of various cell lines, using HNF4A antibody (CAB2085) at 1:1000 dilution. Secondary antibody: HRP Goat Anti-Rabbit IgG (H+L) (CABS014) at 1:10000 dilution. Lysates/proteins: 25ug per lane. Blocking buffer: 3% nonfat dry milk in TBST. Detection: ECL Basic Kit (CABM00020). Exposure time: 90s.



Immunohistochemistry of paraffin-embedded mouse liver using HNF4A Antibody (CAB2085) at dilution of 1:100 (40x lens).



Immunohistochemistry of paraffin-embedded rat pancreas using HNF4A Antibody (CAB2085) at dilution of 1:100 (40x lens).