

IKKBeta Rabbit Polyclonal Antibody



CAB2087

Product Information

Size:

20uL, 50uL, 100uL, 200uL

Observed MW:

87kDa

Calculated MW:

29kDa/79kDa/85kDa/86kDa

Applications:

WB IHC IF

Reactivity:

Human, Mouse, Rat

Protein Background

The protein encoded by this gene phosphorylates the inhibitor in the inhibitor/NF-kappa-B complex, causing dissociation of the inhibitor and activation of NF-kappa-B. The encoded protein itself is found in a complex of proteins. Several transcript variants, some protein-coding and some not, have been found for this gene.

Immunogen information

Gene ID:

3551

Uniprot

O14920

Synonyms:

IKKBK; IKK-beta; IKK2; IKKB; IMD15; NFKBIKB; IKK beta

Antibody Information

Recommended dilutions:

WB 1:500 - 1:2000 IHC 1:50
- 1:200 IF 1:50 - 1:200

Source:

Rabbit

Isotype:

IgG

Purification:

Affinity purification

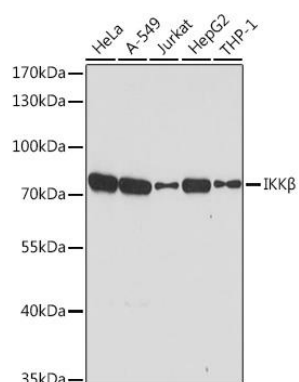
Immunogen:

A synthetic peptide corresponding to a sequence within amino acids 630-730 of human IKKBeta (NP_001547.1).

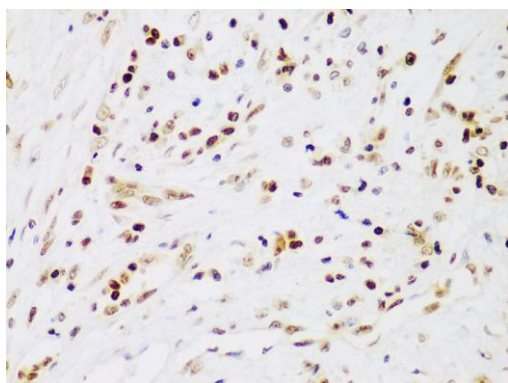
Storage:

Store at -20°C. Avoid freeze / thaw cycles. Buffer: PBS with 0.02% sodium azide, 50% glycerol, pH7.3.

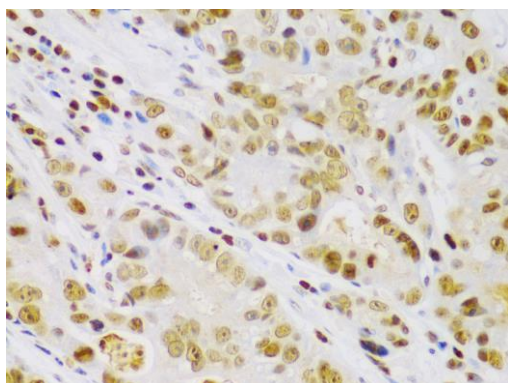
Product Images



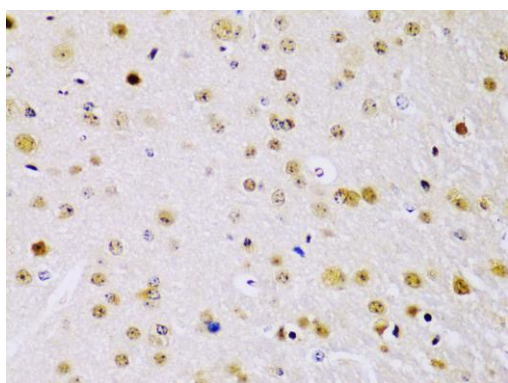
Western blot analysis of extracts of various cell lines, using IKKbeta antibody (CAB2087) at 1:1000 dilution. Secondary antibody: HRP Goat Anti-Rabbit IgG (H+L) (CABS014) at 1:10000 dilution. Lysates/proteins: 25ug per lane. Blocking buffer: 3% nonfat dry milk in TBST. Detection: ECL Basic Kit (CABM00020). Exposure time: 60s.



Immunohistochemistry of paraffin-embedded human liver cancer using IKKbeta antibody (CAB2087) at dilution of 1:100 (40x lens).



Immunohistochemistry of paraffin-embedded human gastric cancer using IKKb antibody (CAB2087) at dilution of 1:100 (40x lens).



Immunohistochemistry of paraffin-embedded mouse brain using IKKbeta antibody (CAB2087) at dilution of 1:100 (40x lens).