

IL1RN Rabbit Polyclonal Antibody



CAB2088

Product Information

Size:

20uL, 50uL, 100uL, 200uL

Observed MW:

23kDa

Calculated MW:

16kDa/17kDa/19kDa/20kDa

Applications:

WB IF

Reactivity:

Human, Mouse, Rat

Antibody Information

Recommended dilutions:

WB 1:500 - 1:2000 IF 1:50 - 1:200

Source:

Rabbit

Isotype:

IgG

Purification:

Affinity purification

Protein Background

The protein encoded by this gene is a member of the interleukin 1 cytokine family. This protein inhibits the activities of interleukin 1, alpha (IL1A) and interleukin 1, beta (IL1B), and modulates a variety of interleukin 1 related immune and inflammatory responses. This gene and five other closely related cytokine genes form a gene cluster spanning approximately 400 kb on chromosome 2. A polymorphism of this gene is reported to be associated with increased risk of osteoporotic fractures and gastric cancer. Several alternatively spliced transcript variants encoding distinct isoforms have been reported.

Immunogen information

Gene ID:

3557

Uniprot

P18510

Synonyms:

IL1RN; DIRA; ICIL-1RA; IL-1RN; IL-1ra; IL-1ra3; IL1F3; IL1RA; IRAP; MVCD4

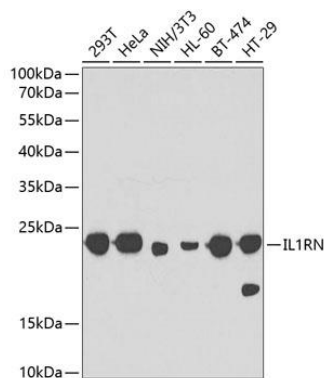
Immunogen:

Recombinant fusion protein containing a sequence corresponding to amino acids 1-159 of human IL1RN (NP_000568.1).

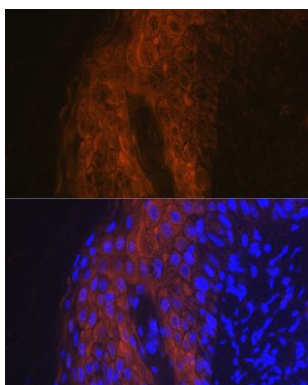
Storage:

Store at -20°C. Avoid freeze / thaw cycles. Buffer: PBS with 0.02% sodium azide, 50% glycerol, pH7.3.

Product Images



Western blot analysis of extracts of various cell lines, using IL1RN antibody (CAB2088) at 1:1000 dilution. Secondary antibody: HRP Goat Anti-Rabbit IgG (H+L) (CABS014) at 1:10000 dilution. Lysates/proteins: 25ug per lane. Blocking buffer: 3% nonfat dry milk in TBST.



Immunofluorescence analysis of human skin cancer using IL1RN Rabbit pAb (CAB2088) at dilution of 1:100 (40x lens). Blue: DAPI for nuclear staining.