

# Insulin Rabbit Polyclonal Antibody



CAB2090

---

## Product Information

### Size:

20uL, 50uL, 100uL, 200uL

### Observed MW:

12kDa

### Calculated MW:

11kDa/21kDa

### Applications:

WB, IHC, IF

### Reactivity:

Human, Mouse, Rat

### Category:

Polyclonal Antibodies

## Protein Background

After removal of the precursor signal peptide, proinsulin is post-translationally cleaved into three peptides: the B chain and A chain peptides, which are covalently linked via two disulfide bonds to form insulin, and C-peptide. Binding of insulin to the insulin receptor (INSR) stimulates glucose uptake. A multitude of mutant alleles with phenotypic effects have been identified. There is a read-through gene, INS-IGF2, which overlaps with this gene at the 5' region and with the IGF2 gene at the 3' region. Alternative splicing results in multiple transcript variants.

## Immunogen information

### Gene ID:

3630

### Uniprot

P01308

### Synonyms:

IDDM; IDDM1; IDDM2; ILPR; IRDN; MODY10; INS; Insulin; insulin

### Immunogen:

Recombinant fusion protein containing a sequence corresponding to amino acids 1-110 of human INS (NP\_000198.1).

### Storage:

Store at -20°C. Avoid freeze / thaw cycles.

Buffer: PBS with 0.02% sodium azide, 50% glycerol, pH7.3.

## Antibody Information

### Recommended dilutions:

WB 1:500 - 1:2000

IHC 1:50 - 1:200

IF 1:50 - 1:200

### Source:

Rabbit

### Isotype:

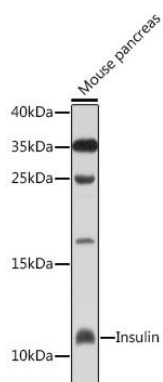
IgG

### Purification:

Affinity purification

## Product Images

---



Western blot analysis of extracts of mouse pancreas, using Insulin antibody (CAB2090) at 1:1000 dilution.

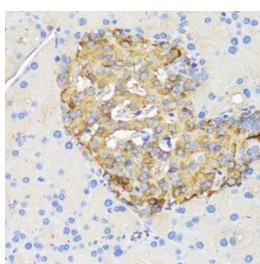
Secondary antibody: HRP Goat Anti-Rabbit IgG (H+L) (CABS014) at 1:10000 dilution.

Lysates/protein Insulin: 25ug per lane.

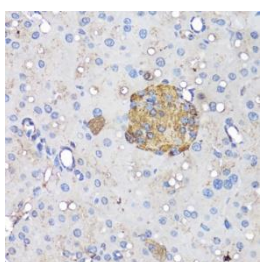
Blocking buffer: 3% non-fat dry milk in TBST.

Detection: ECL Enhanced Kit (AbGn00021).

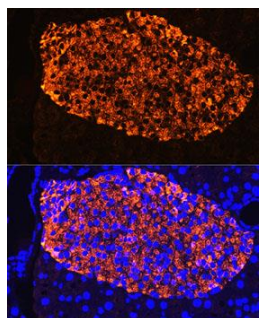
Exposure time: 30s.



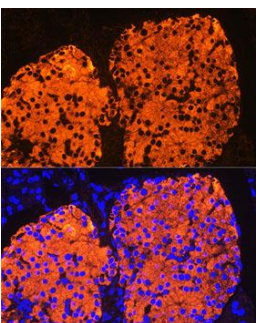
Immunohistochemistry of paraffin-embedded rat pancreatic islet using Insulin antibody (CAB2090) at dilution of 1:50 (40x lens).



Immunohistochemistry of paraffin-embedded mouse pancreatic islet using Insulin antibody (CAB2090) at dilution of 1:50 (40x lens).



Immunofluorescence analysis of Rat pancreas using Insulin Rabbit pAb (CAB2090) at dilution of 1:100. Blue: DAPI for nuclear staining.



Immunofluorescence analysis of Mouse pancreatic islet using Insulin Rabbit pAb (CAB2090) at dilution of 1:100. Blue: DAPI for nuclear staining.