

# LYN Rabbit Polyclonal Antibody



CAB2093

---

## Product Information

### Size:

20uL, 50uL, 100uL, 200uL

### Observed MW:

55kDa

### Calculated MW:

56kDa/58kDa

### Applications:

WB

### Reactivity:

Human, Mouse, Rat

## Protein Background

This gene encodes a tyrosine protein kinase, which maybe involved in the regulation of mast cell degranulation, and erythroid differentiation. Alternatively spliced transcript variants encoding different isoforms have been found for this gene.

## Immunogen information

### Gene ID:

4067

### Uniprot

P07948

### Synonyms:

LYN; JTK8; p53Lyn; p56Lyn

## Antibody Information

### Recommended dilutions:

WB 1:500 - 1:2000

### Source:

Rabbit

### Isotype:

IgG

### Purification:

Affinity purification

### Immunogen:

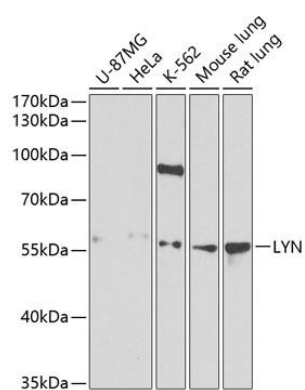
Recombinant fusion protein containing a sequence corresponding to amino acids 1-240 of human LYN (NP\_002341.1).

### Storage:

Store at -20°C. Avoid freeze / thaw cycles. Buffer: PBS with 0.02% sodium azide, 50% glycerol, pH7.3.

## Product Images

---



Western blot analysis of extracts of various cell lines, using LYN antibody (CAB2093) at 1:1000 dilution. Secondary antibody: HRP Goat Anti-Rabbit IgG (H+L) (CABS014) at 1:10000 dilution. Lysates/proteins: 25ug per lane. Blocking buffer: 3% nonfat dry milk in TBST. Detection: ECL Basic Kit (CABM00020). Exposure time: 90s.