

Ki67 Rabbit Polyclonal Antibody



CAB2094

Product Information

Size:

20uL, 50uL, 100uL, 200uL

Observed MW:

359KDa

Calculated MW:

319kDa/358kDa

Applications:

WB, IHC, IF

Reactivity:

Human, Mouse, Rat

Category:

Polyclonal Antibodies

Antibody Information

Recommended dilutions:

WB 1:500 - 1:2000

IHC 1:50 - 1:100

IF 1:50 - 1:100

Source:

Rabbit

Isotype:

IgG

Purification:

Affinity purification

Protein Background

This gene encodes a nuclear protein that is associated with and may be necessary for cellular proliferation. Alternatively spliced transcript variants have been described. A related pseudogene exists on chromosome X.

Immunogen information

Gene ID:

4288

Uniprot

P46013

Synonyms:

MKI67; KIA; MIB-; MIB-1; PPP1R105; marker of proliferation Ki-67; Ki67

Immunogen:

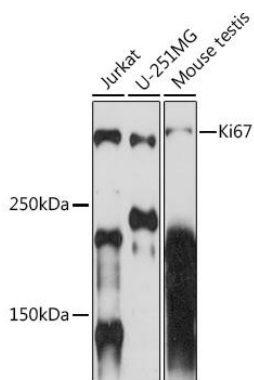
Recombinant fusion protein containing a sequence corresponding to amino acids 1200-1300 of human Ki67 (NP_001139438.1).

Storage:

Store at -20°C. Avoid freeze / thaw cycles.

Buffer: PBS with 0.02% sodium azide, 50% glycerol, pH7.3.

Product Images



Western blot analysis of extracts of various cell lines, using Ki67 Rabbit pAb (CAB2094) at 1:1000 dilution.

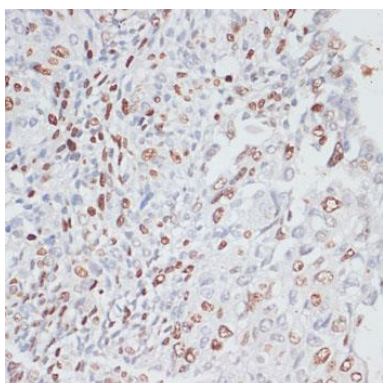
Secondary antibody: HRP Goat Anti-Rabbit IgG (H+L) (CABS014) at 1:10000 dilution.

Lysates/proteins: 25ug per lane.

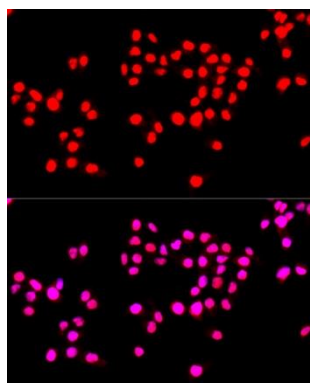
Blocking buffer: 3% non-fat dry milk in TBST.

Detection: ECL Basic Kit (AbGn00020).

Exposure time: 90s.



Immunohistochemistry of paraffin-embedded human lung cancer using Ki67 antibody (CAB2094) at dilution of 1:200 (40x lens).



Immunofluorescence analysis of HeLa cells using Ki67 antibody (CAB2094) at dilution of 1:100. Blue: DAPI for nuclear staining.