

# REG3A Rabbit Polyclonal Antibody



CAB2101

---

## Product Information

### Size:

20uL, 50uL, 100uL, 200uL

### Observed MW:

15kDa

### Calculated MW:

19kDa

### Applications:

WB IHC IF

### Reactivity:

Human, Mouse, Rat

## Antibody Information

### Recommended dilutions:

WB 1:500 - 1:2000 IHC 1:50  
- 1:100 IF 1:50 - 1:200

### Source:

Rabbit

### Isotype:

IgG

### Purification:

Affinity purification

## Protein Background

This gene encodes a pancreatic secretory protein that may be involved in cell proliferation or differentiation. It has similarity to the C-type lectin superfamily. The enhanced expression of this gene is observed during pancreatic inflammation and liver carcinogenesis. The mature protein also functions as an antimicrobial protein with antibacterial activity. Alternate splicing results in multiple transcript variants that encode the same protein.

## Immunogen information

### Gene ID:

5068

### Uniprot

Q06141

### Synonyms:

REG3A; HIP; HIP/PAP; INGAP; PAP; PAP-H; PAP1; PBCGF; REG-III;  
REG3

### Immunogen:

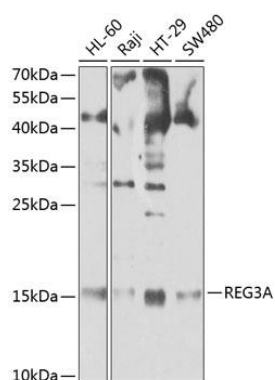
Recombinant fusion protein containing a sequence corresponding to amino acids 27-175 of human REG3A (NP\_002571.1).

### Storage:

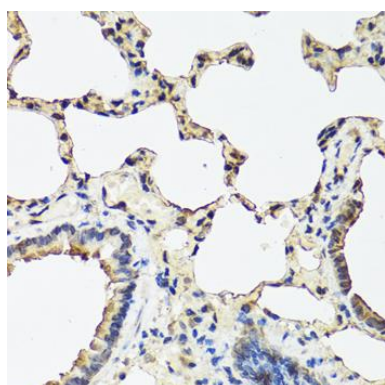
Store at -20°C. Avoid freeze / thaw cycles. Buffer: PBS with 0.02% sodium azide, 50% glycerol, pH7.3.

## Product Images

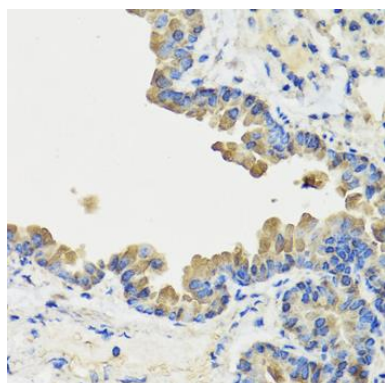
---



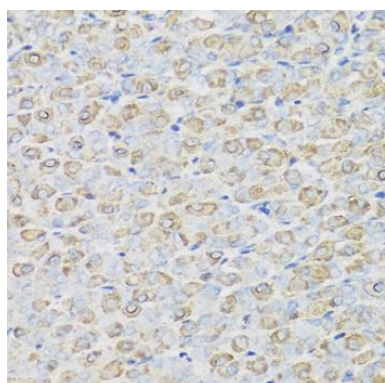
Western blot analysis of extracts of various cell lines, using REG3A antibody (CAB2101) at 1:1000 dilution. Secondary antibody: HRP Goat Anti-Rabbit IgG (H+L) (CABS014) at 1:10000 dilution. Lysates/proteins: 25ug per lane. Blocking buffer: 3% nonfat dry milk in TBST. Detection: ECL Enhanced Kit (CABM00021). Exposure time: 30s.



Immunohistochemistry of paraffin-embedded rat lung using REG3A antibody (CAB2101) at dilution of 1:100 (40x lens).



Immunohistochemistry of paraffin-embedded mouse lung using REG3A antibody (CAB2101) at dilution of 1:100 (40x lens).



Immunohistochemistry of paraffin-embedded mouse stomach using REG3A antibody (CAB2101) at dilution of 1:100 (40x lens).